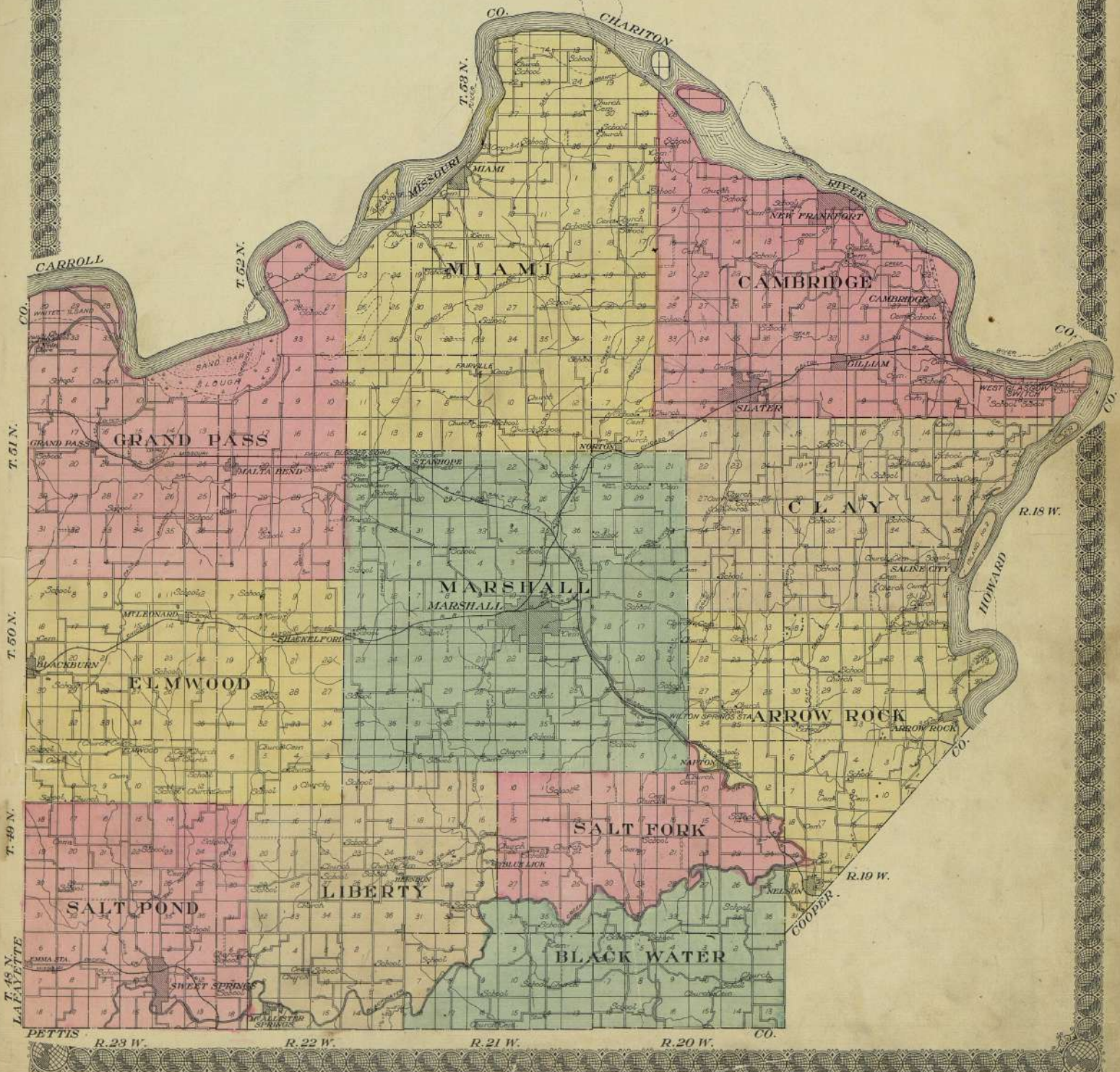


# OUTLINE MAP OF SALINE COUNTY MISSOURI

Copyright 1916 by Geo. A. Ogle & Co.

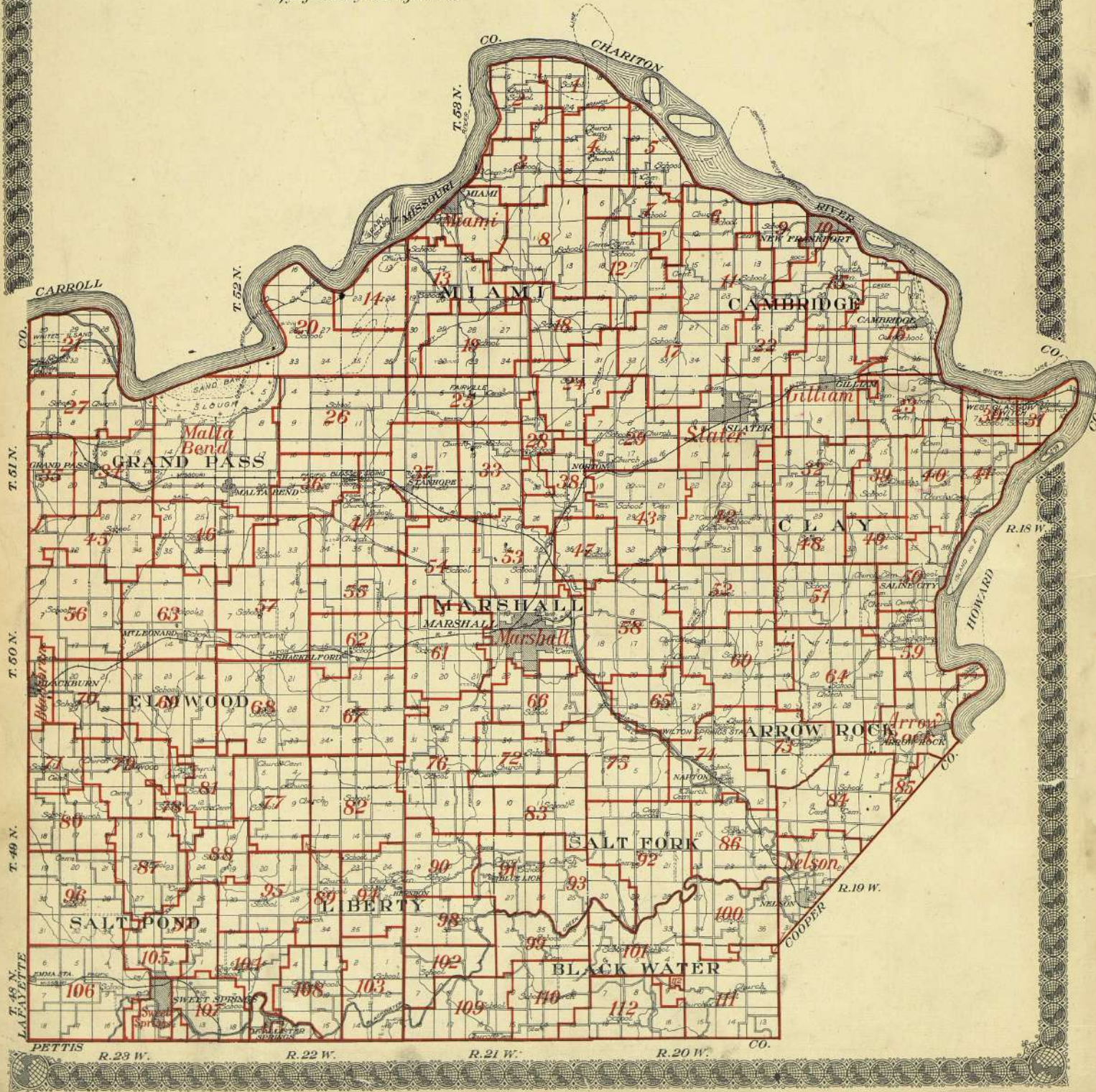
Scale 3/8 of 1 inch to 1 mile

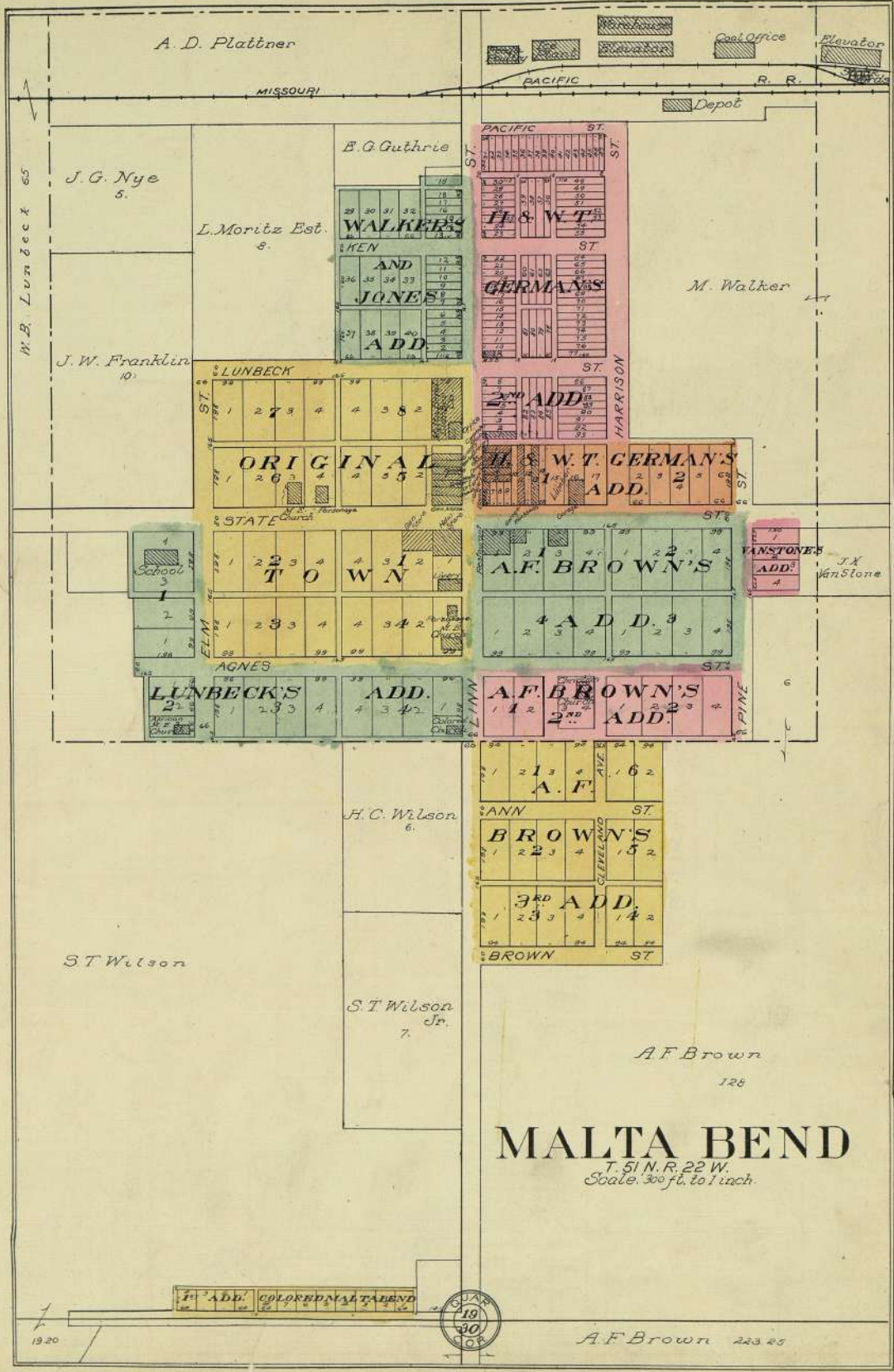


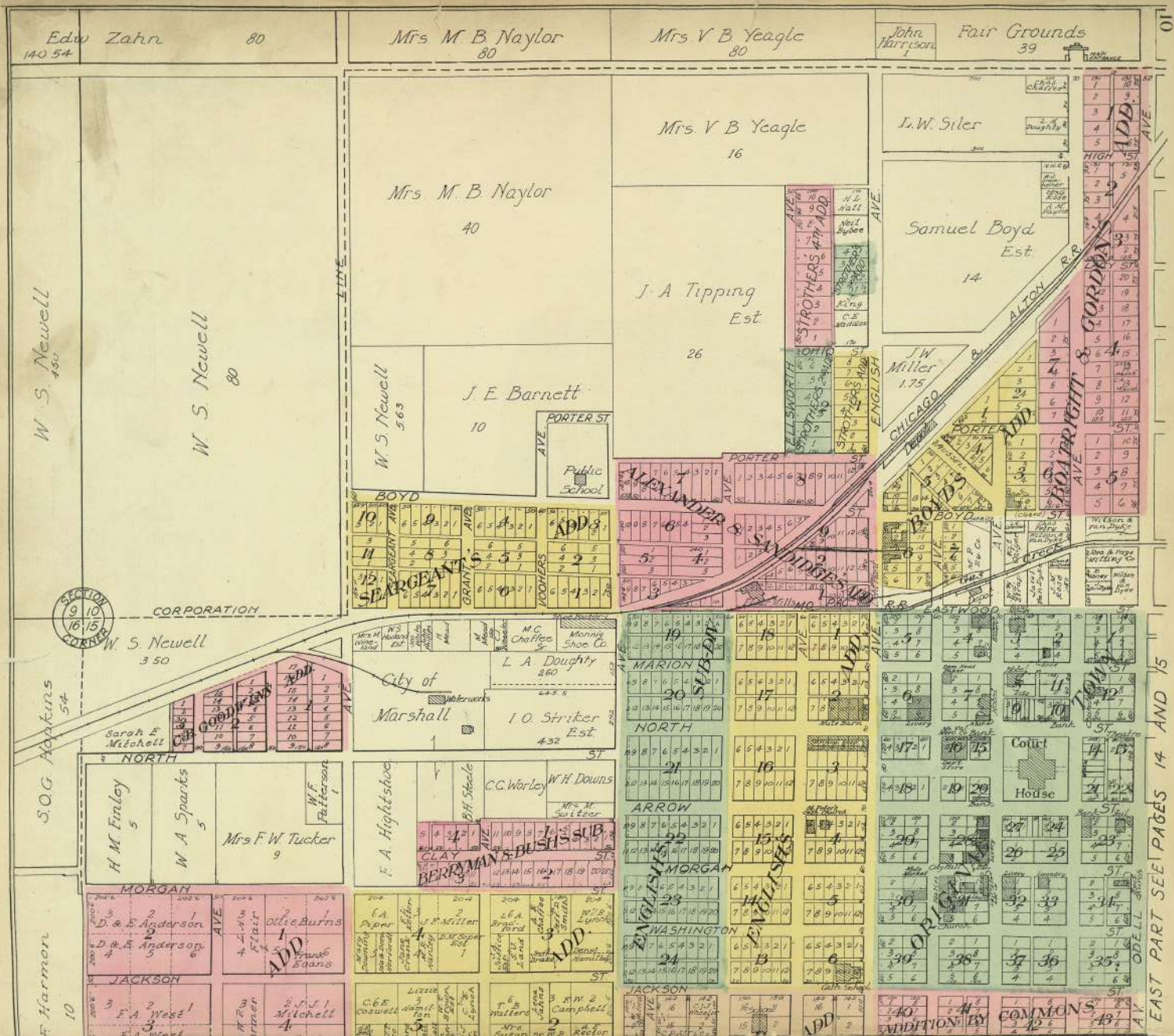
# SCHOOL DISTRICT MAP OF SALINE COUNTY MISSOURI

Copyright 1916 by Geo. A. Ogle & Co.

Scale 2/3 of 1 inch to 1 mile







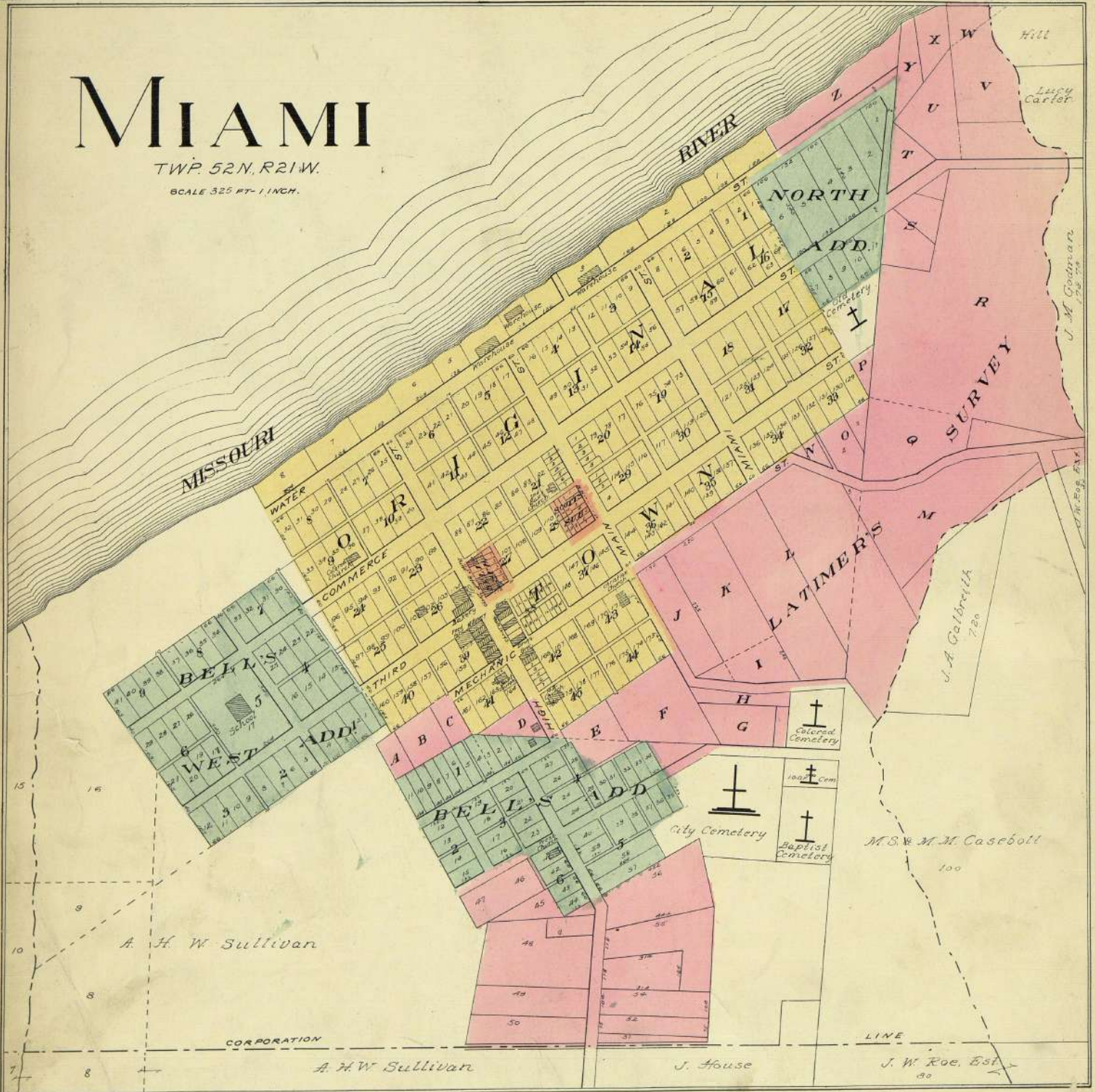
EAST PART SEE PAGES 14 AND 15



# MIAMI

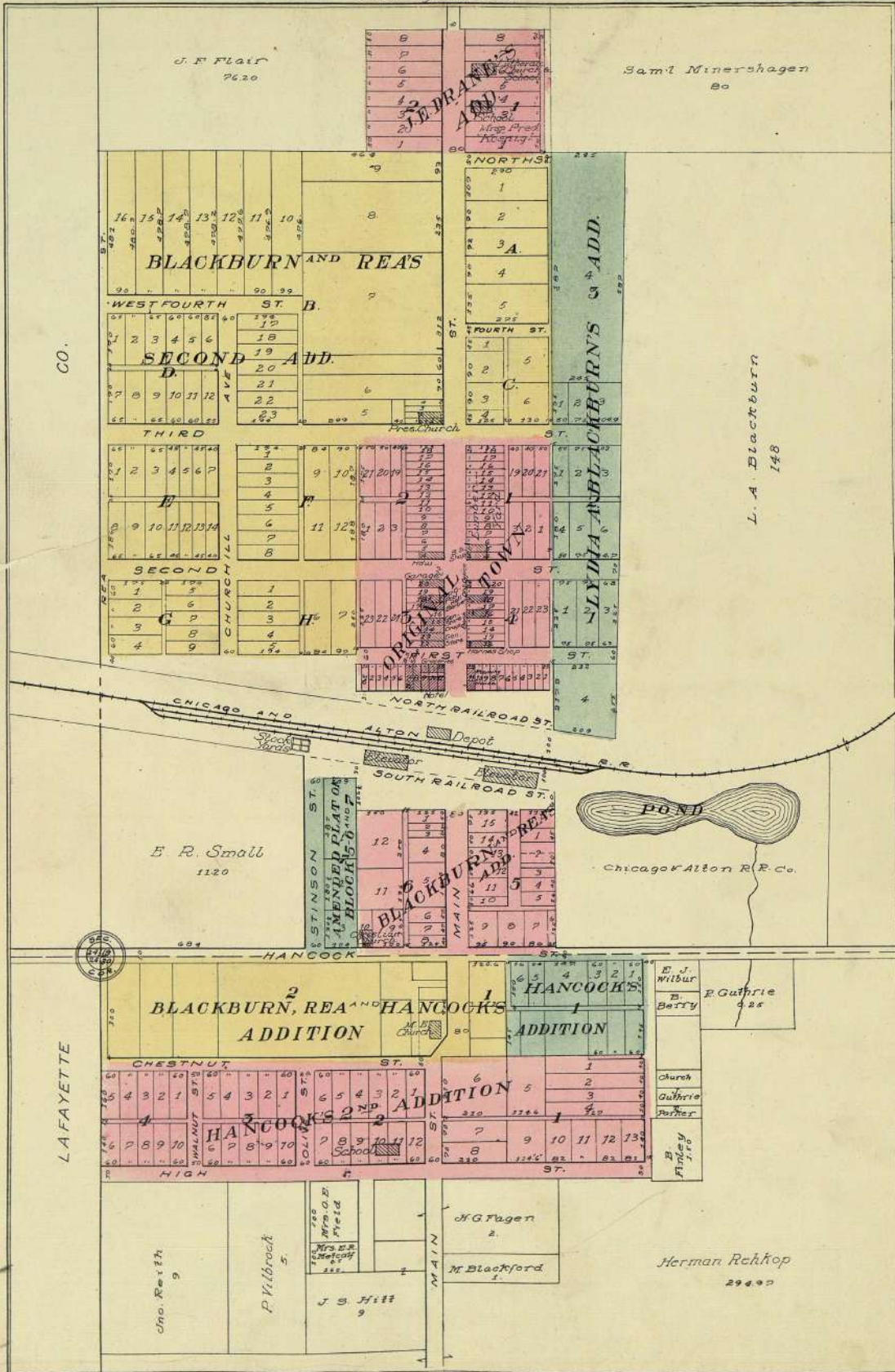
TWP. 52 N., R. 21 W.

SCALE 325 FT. = 1 INCH.



# BLACKBURN

T. 50 N. R. 23 W.  
Scale 500 ft. to 1 inch.



CO.

L. A. Blackburn  
148

LAFAYETTE



EAST PART OF  
**MARSHALL**

COUNTY SEAT OF SALINE CO., MISSOURI.

T. 50 N., R. 21 W.

Scale 320 feet to 1 inch

Copyright 1916 by Geo. A. Hyle & Co.

Missouri Colony

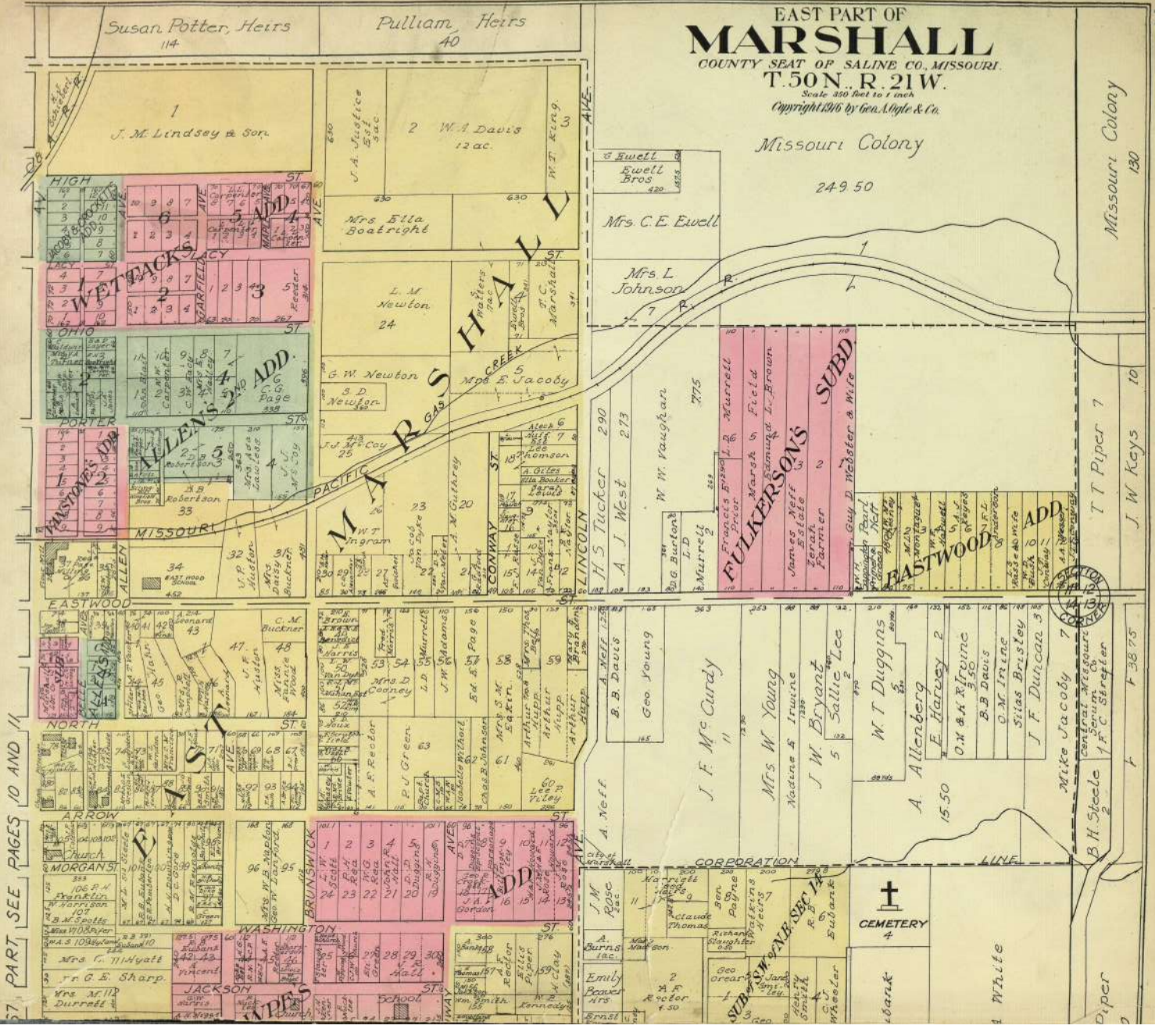
249 50

Missouri Colony 130

T. T. Piper 7  
J. W. Keys 10

Mike Jacoby 7  
Central Missouri  
B.H. Steele  
F.C. Streeter

Piper



PART SEE PAGES 10 AND 11

14

14

FOR WE

1	2	3	4	5	6	7	8	9	10	11	12	13	14	15	16	17	18	19	20	21	22	23	24	25	26	27	28	29	30	31	32	33	34	35	36	37	38	39	40	41	42	43	44	45	46	47	48	49	50	51	52	53	54	55	56	57	58	59	60	61	62	63	64	65	66	67	68	69	70	71	72	73	74	75	76	77	78	79	80	81	82	83	84	85	86	87	88	89	90	91	92	93	94	95	96	97	98	99	100
---	---	---	---	---	---	---	---	---	----	----	----	----	----	----	----	----	----	----	----	----	----	----	----	----	----	----	----	----	----	----	----	----	----	----	----	----	----	----	----	----	----	----	----	----	----	----	----	----	----	----	----	----	----	----	----	----	----	----	----	----	----	----	----	----	----	----	----	----	----	----	----	----	----	----	----	----	----	----	----	----	----	----	----	----	----	----	----	----	----	----	----	----	----	----	----	----	----	----	-----

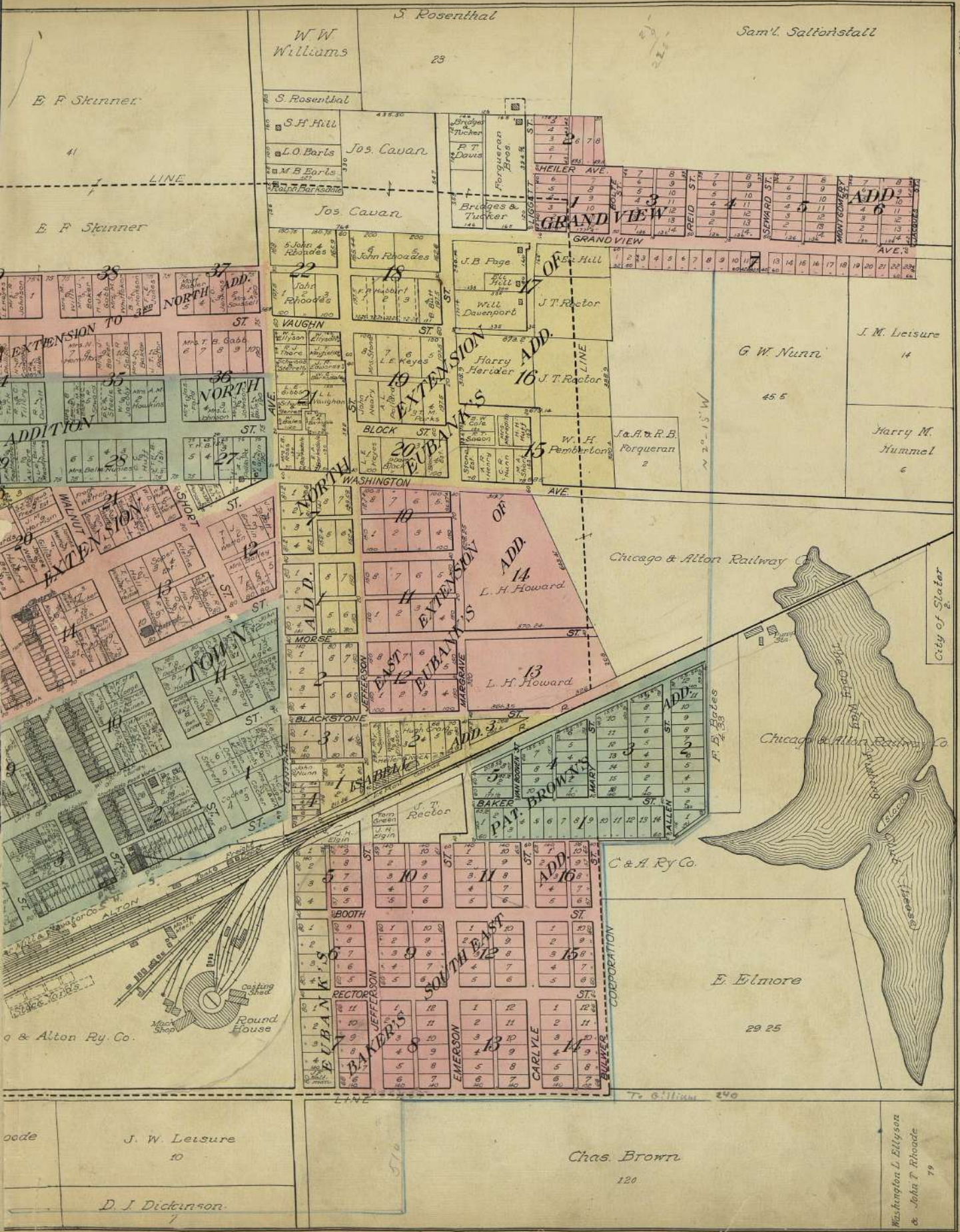
D. D. Duggins 825	R. Nickles 4	T. W. Phillips 4	S. A. White.
George W. Lankford 10	Y. Lockridge 5	J. Mans Maud B Hactney	R. Nickles
		G. L. Burnside 4	W. A. Smith 4
			Ridge Park Cemetery 4
			40
			H. A. Austin 120
			J. M. Piper 160
			College Hill Farm 160
			D. D. Duggins and J. R. Napton.











E. F. Skinner

E. F. Skinner

W.W. Williams  
23

S. Rosenthal

Sam'l. Saltorstall

S. Rosenthal

S.F. Hill

L.O. Baris

M.B. Baris

Jos. Cavan

Jos. Cavan

John Rhodes

John Rhodes

J.B. Fage

Will. Davenport

Harry Herder

L.E. Reyes

L.L. Vaughn

W.H. Pemberton

W.H. Pemberton

Washington

Washington

Washington

Washington

Washington

Washington

Washington

Washington

Washington

Washington

Washington

Washington

Washington

Washington

Washington

Washington

Washington

Washington

Washington

Washington

Washington

Washington

Washington

Washington

Washington

Washington

418-30

144

144

144

144

144

144

144

144

144

144

144

144

144

144

144

144

144

144

144

144

144

144

144

144

144

144

144

144

144

144

144

144

144

144

144

144

144

144

144

144

144

144

144

144

144

144

144

144

144

144

144

144

144

144

144

144

144

144

144

144

144

144

144

144

144

144

144

144

144

144

144

144

144

144

144

144

144

144

144

144

144

144

144

144

144

144

144

144

144

144

144

144

144

144

144

144

144

144

144

144

144

144

144

144

144

144

144

144

144

144

144

144

144

144

144

144

144

144

144

144

144

144

144

144

144

144

144

144

144

144

144

144

144

144

144

144

144

144

144

144

144

144

144

144

144

144

144

144

144

144

144

144

144

144

144

144

144

144

144

144

144

144

144

144

144

144

144

144

144

144

144

144

144

144

144

144

144

144

144

144

144

144

144

144

144

144

144

144

144

144

144

144

144

144

144

144

144

144

144

144

144

144

144

144

144

144

144

144

144

144

144

144

144

144

144

144

144

144

144

144

144

144

144

144

144

144

144

144

144

144

144

144

144

144

144

144

144

144

144

144

144

144

144

144

144

144

144

144

144

144

144

144

144

144

144

144

144

144

144

144

144

144

144

144

144

G.W. Nunn

J.M. Leisure

Harry M. Hummel

Chicago & Alton Railway Co.

Chicago & Alton Railway Co.

C. & A. Ry. Co.

E. Elmore

29 25

Chas. Brown

120

Washington L. Elliptson  
& John T. Rhoads

79

J. W. Leisure

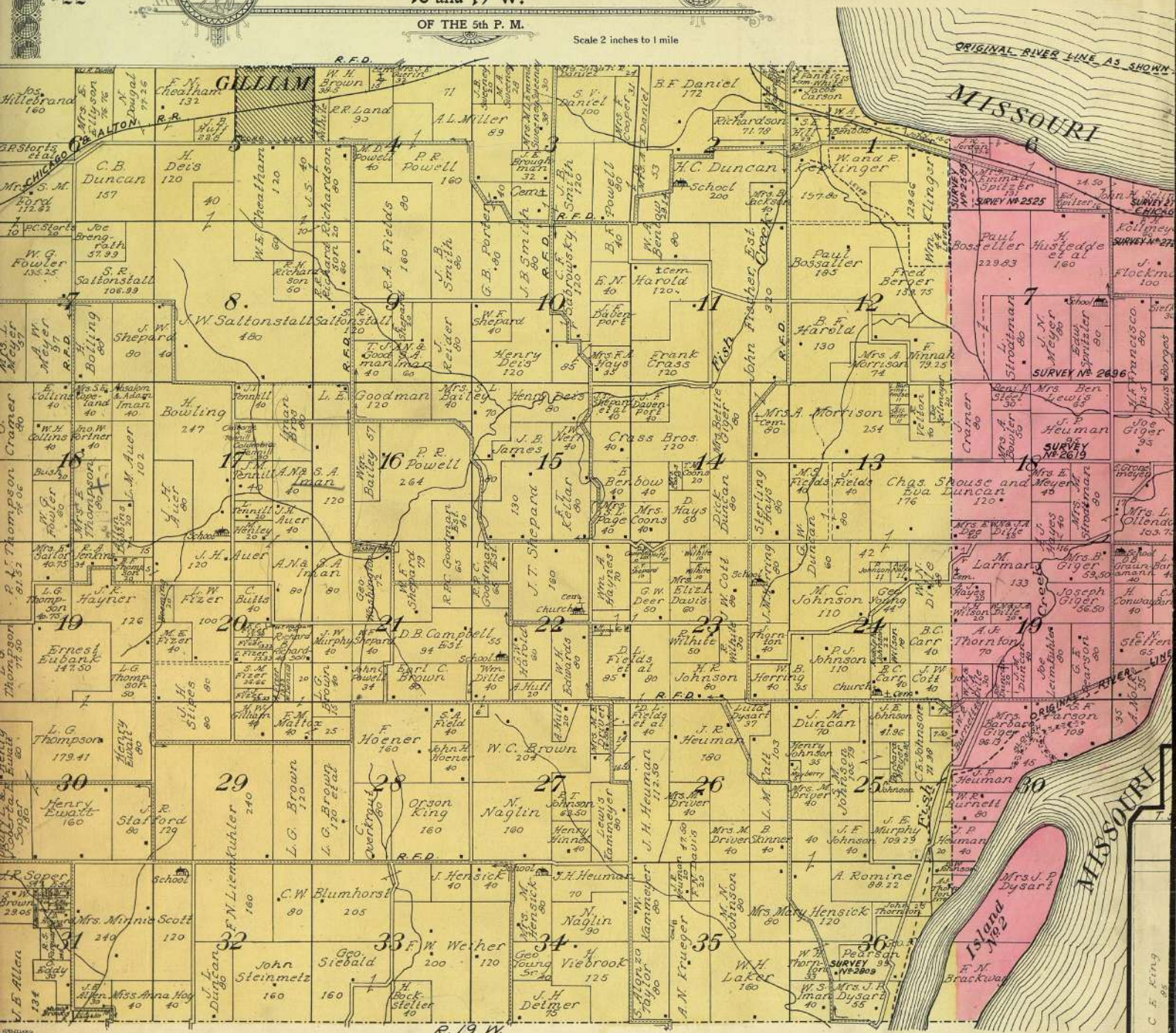




MAP OF  
PART of TOWNSHIP 51 N., RANGES  
18 and 19 W.


OF THE 5th P. M.

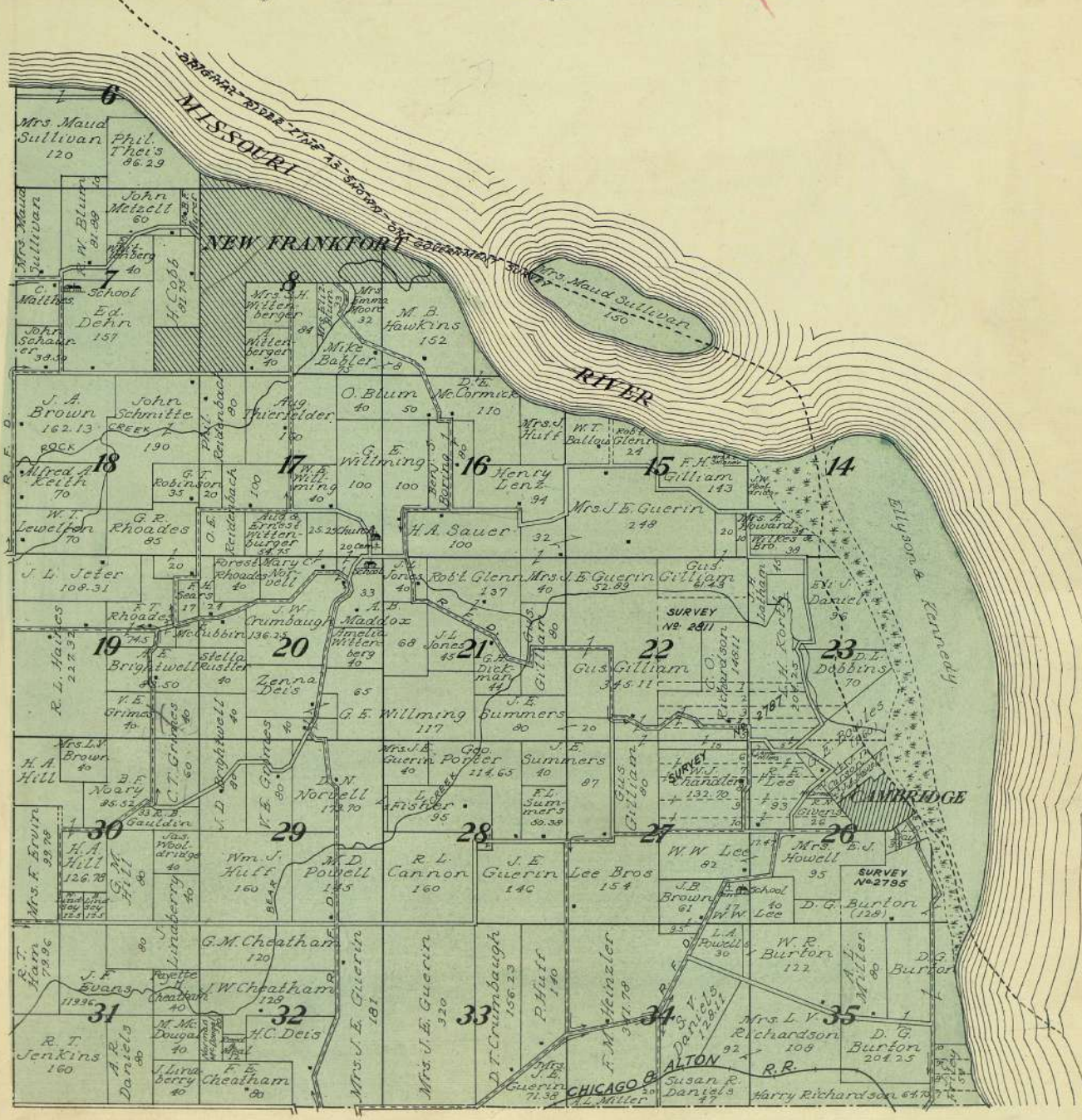
Scale 2 inches to 1 mile



r. 19 W.




  
**MAP OF**
  
**Part of Township 52 N., Range 19 W.**
  
**OF THE 5th P. M.**
  
 Scale 2 inches to 1 mile





# SWEET SPRINGS

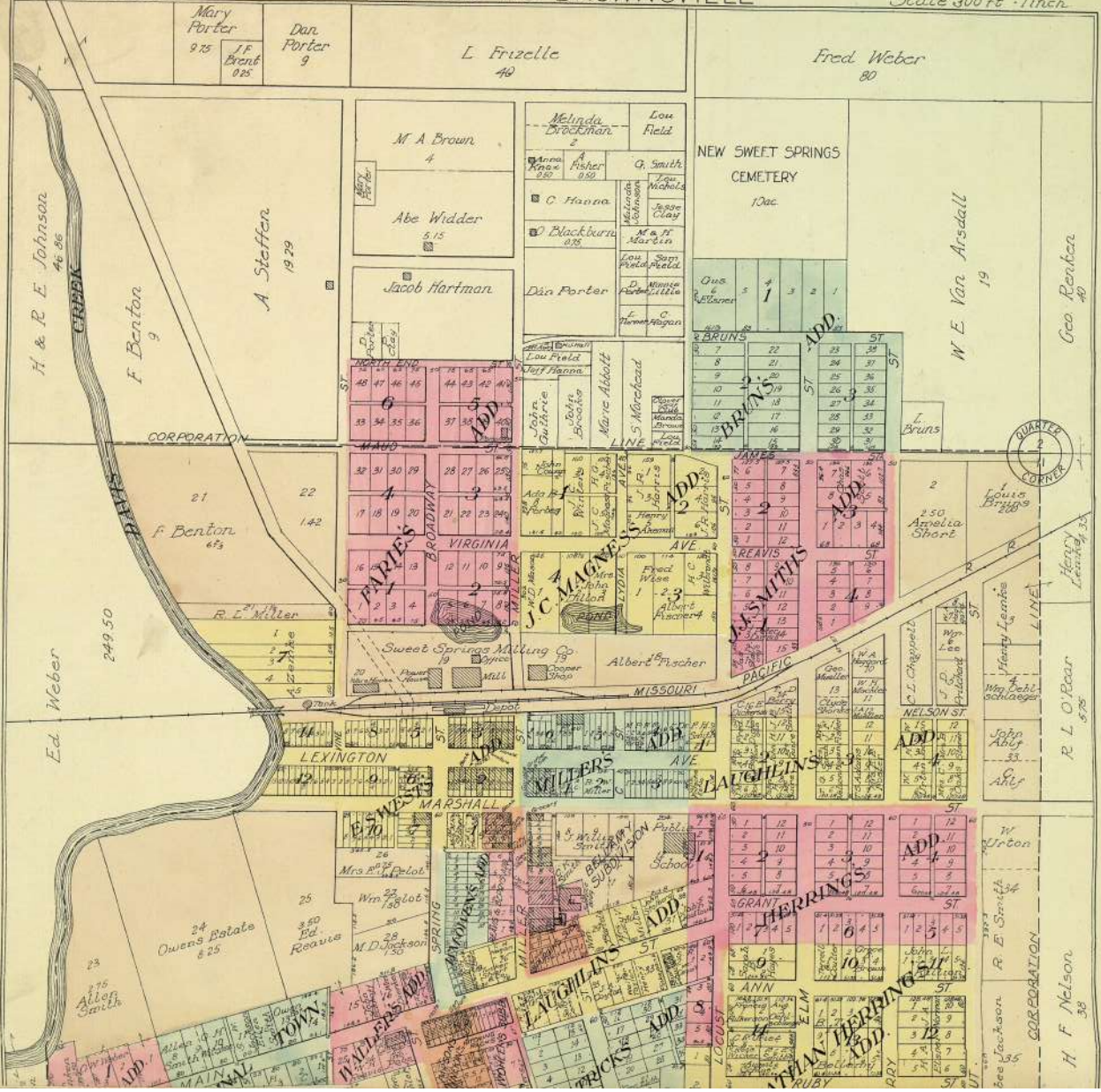
PLATTED AS BROWNSVILLE

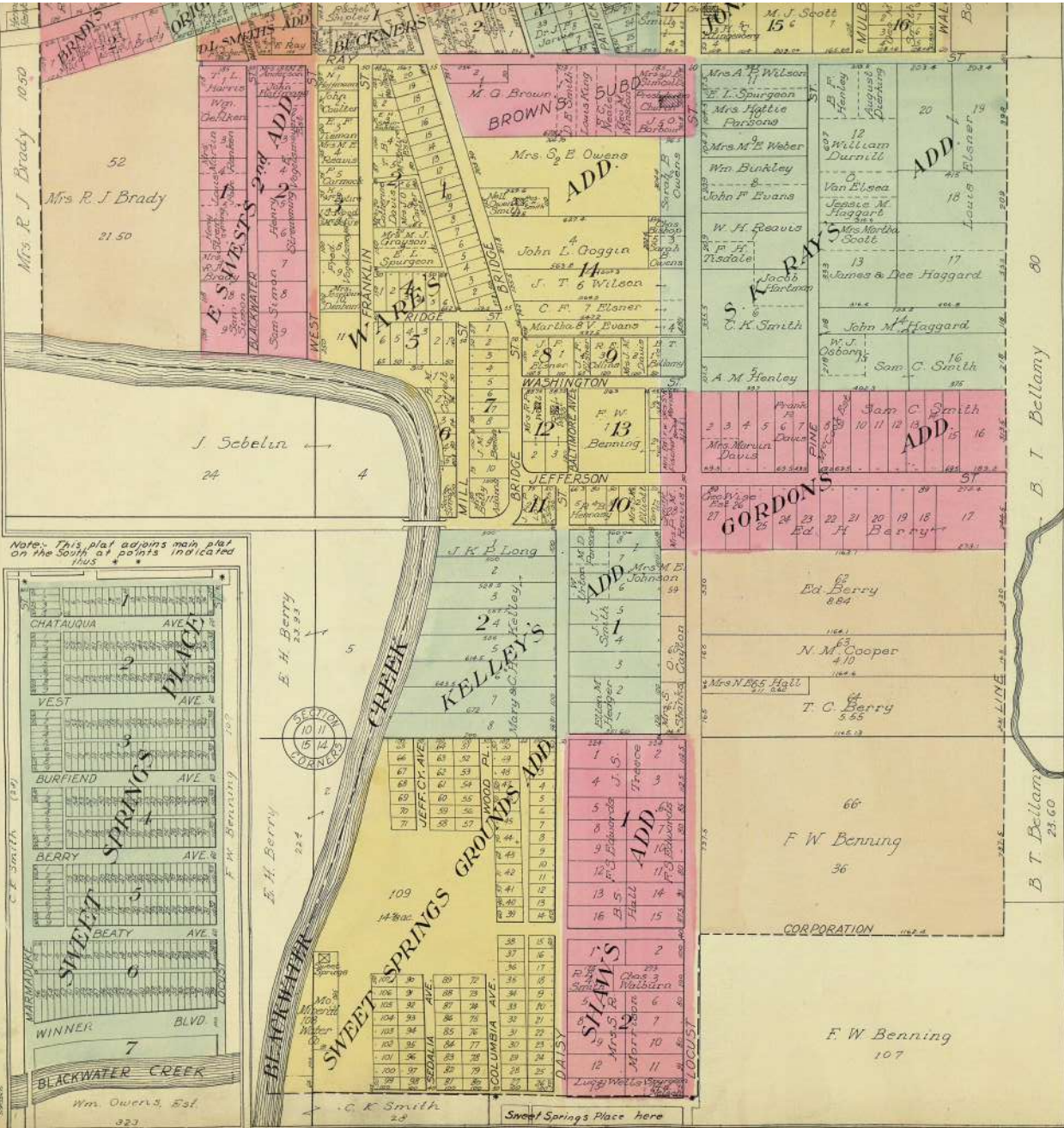
Copyright 1916 by Geo. A. Ogle & Co.

T. 45N. R. 23W.

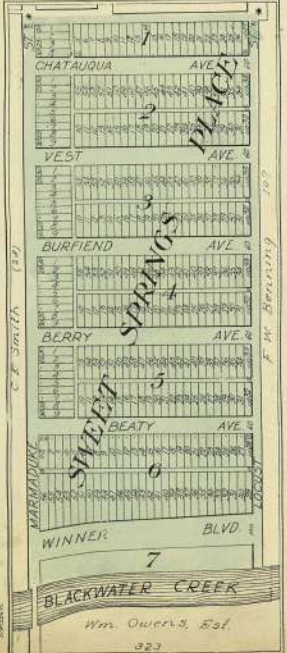
Scale 300 ft. = 1 inch

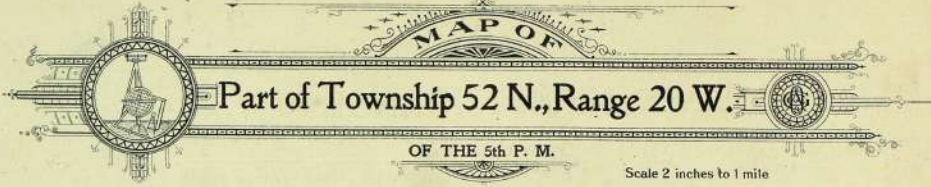
26

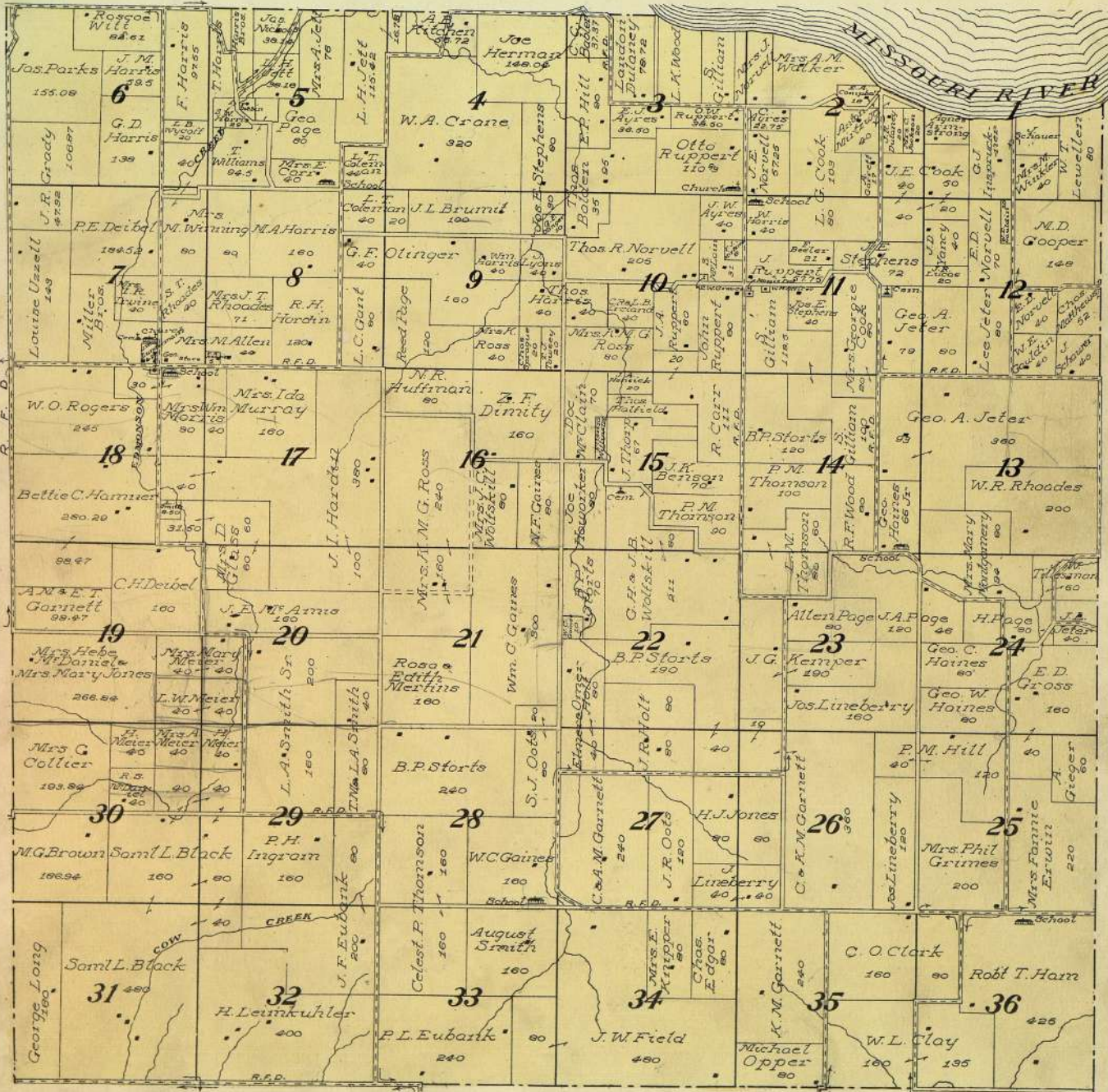




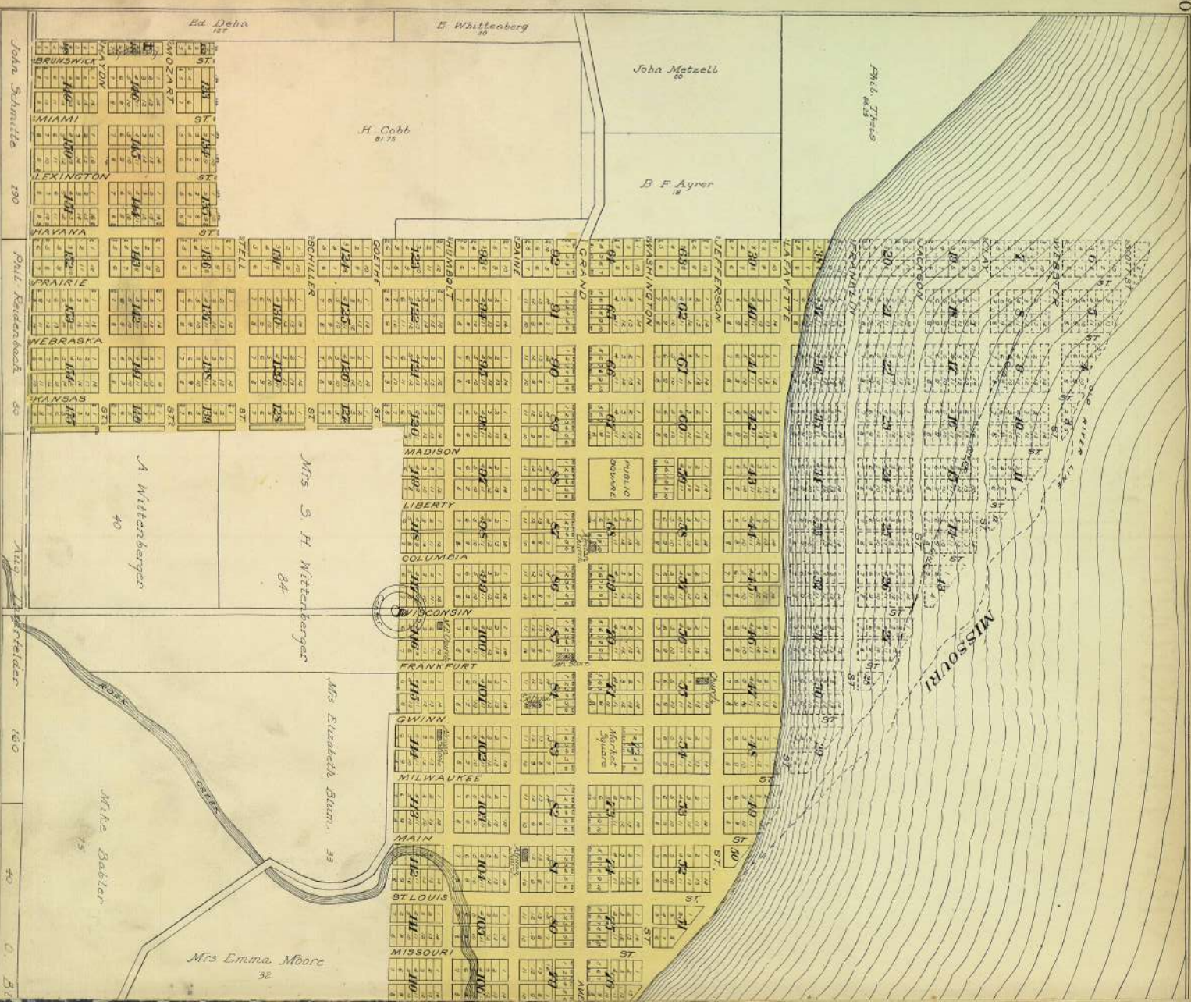
Note: This plat adjoins main plat on the South at points indicated plus




  
**MAP OF**
  
**Part of Township 52 N., Range 20 W.**
  
**OF THE 5th P. M.**
  
 Scale 2 inches to 1 mile







John Schmitz

Paul Rutenbeck

Aug. Reider

180

40

27

Ed Deha  
127

E. Whittleberg  
40

John Metzger  
40

Paul Thomas  
40

H. Cobb  
81.75

B. F. Ayer  
8

A. Wittenberg  
40

Mrs. S. H. Wittenberg  
84

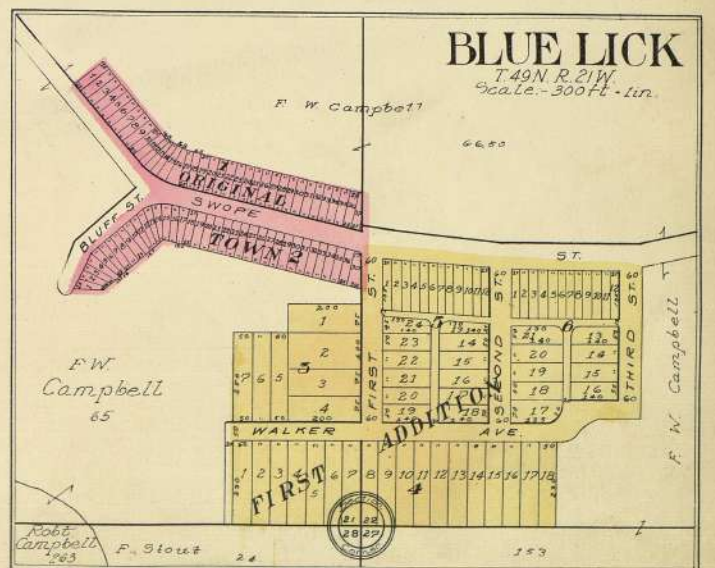
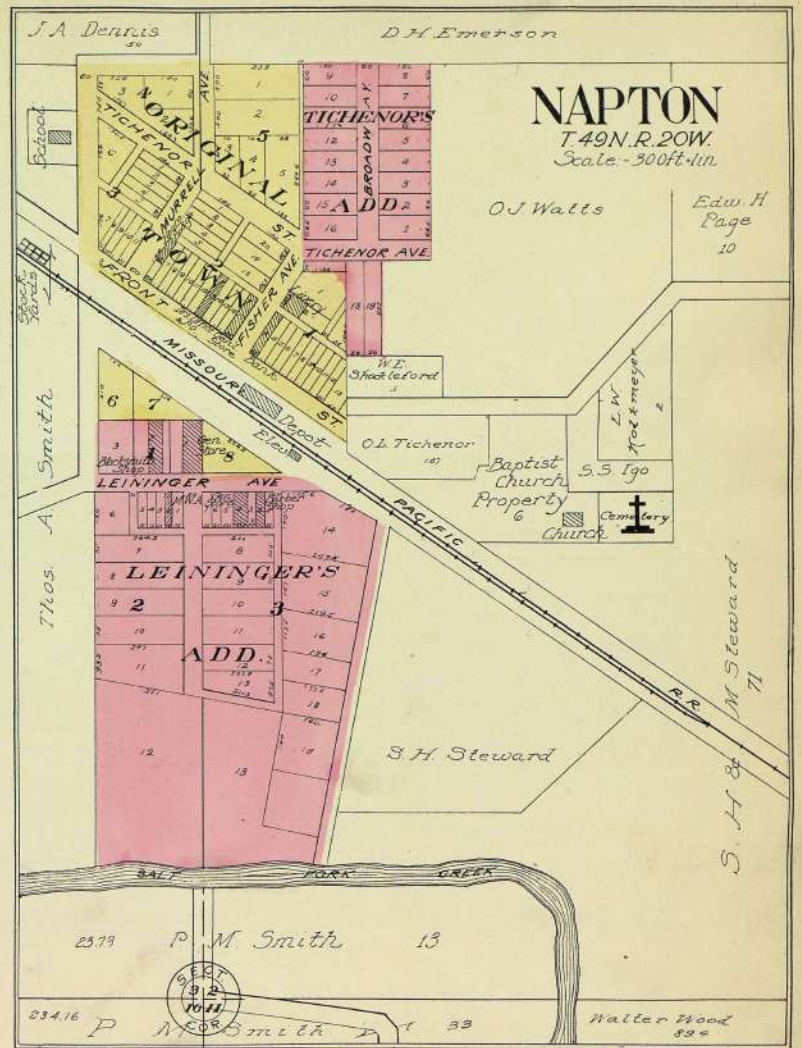
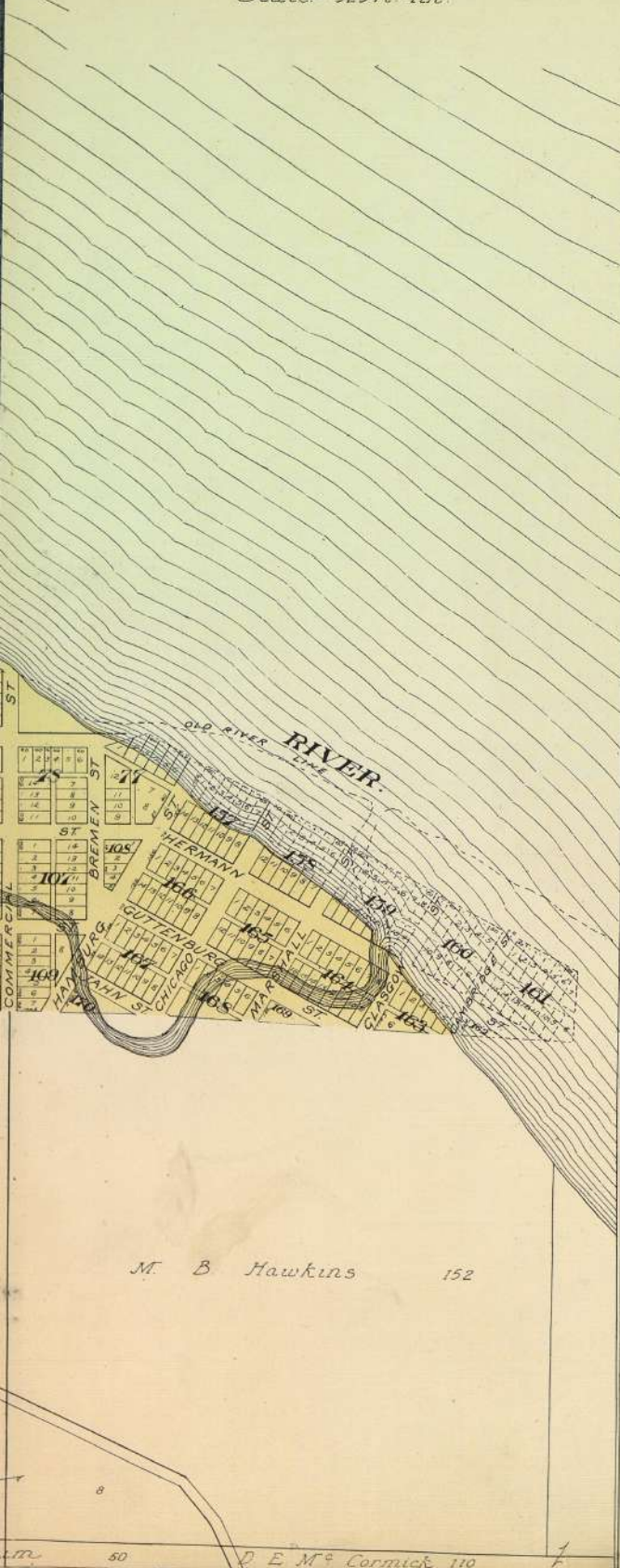
Mrs. Elizabeth Blum  
33

Mrs. Emma Moore  
32

Mike Babler  
75

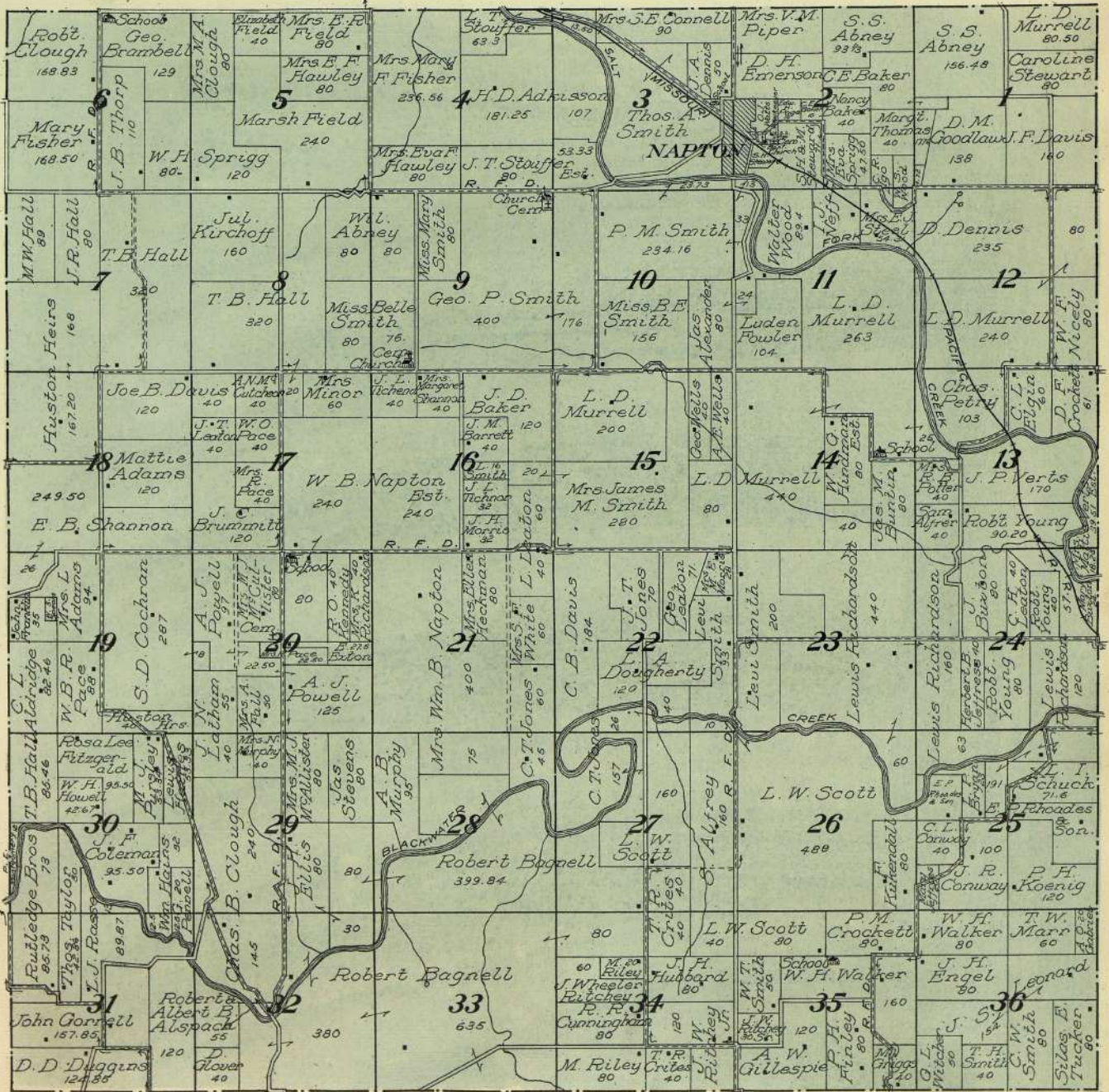
# NEW FRANKFORT

T52N., R.19W.  
Scale: - 525ft. - lin.





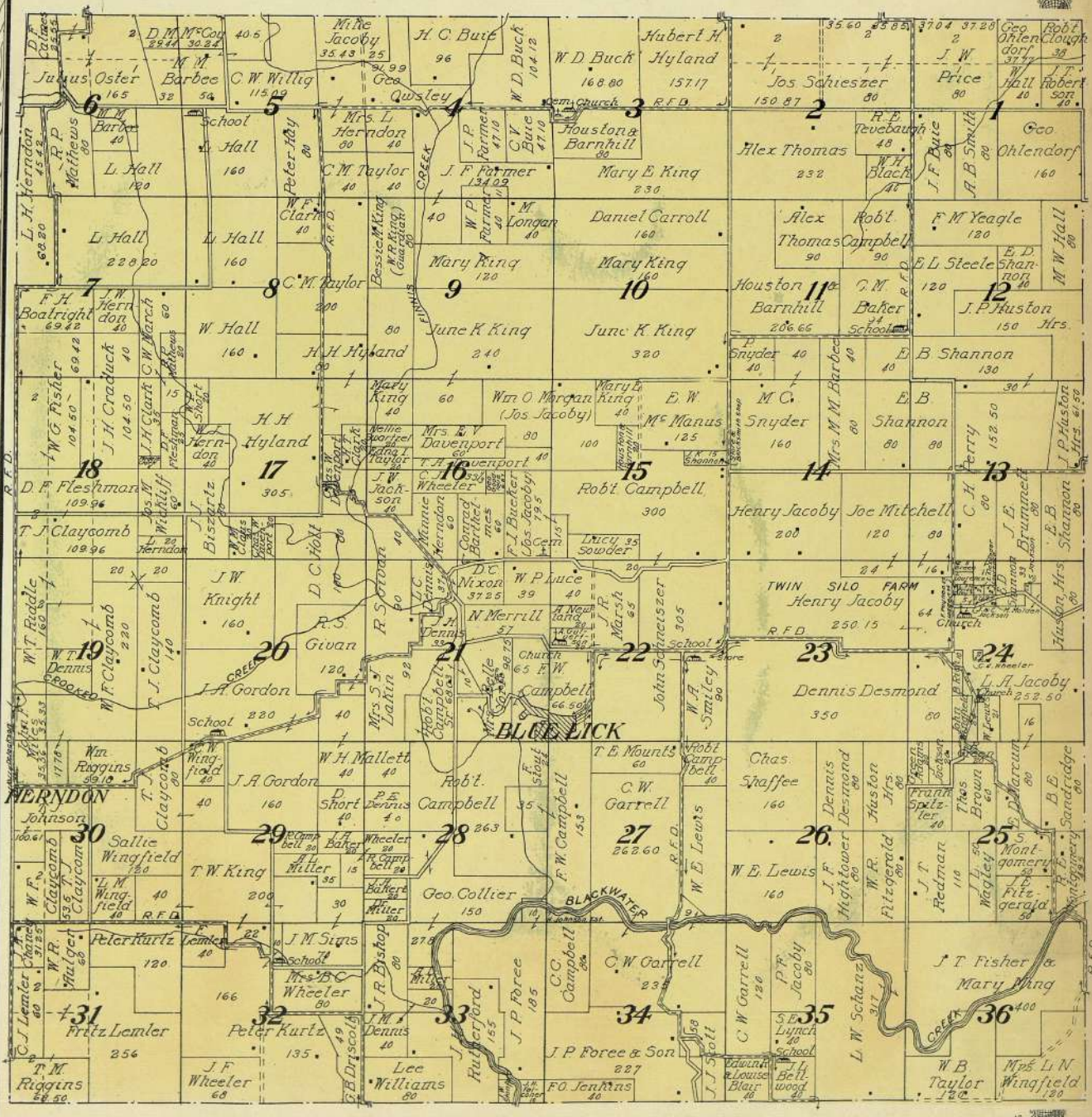
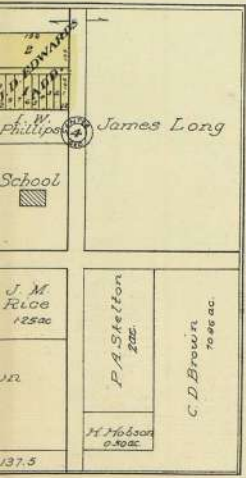
**MAP OF**
  
**TOWNSHIP 49 N., RANGE 20 W.**
  
**OF THE 5th P. M.**
  
 Scale 2 inches to 1 mile



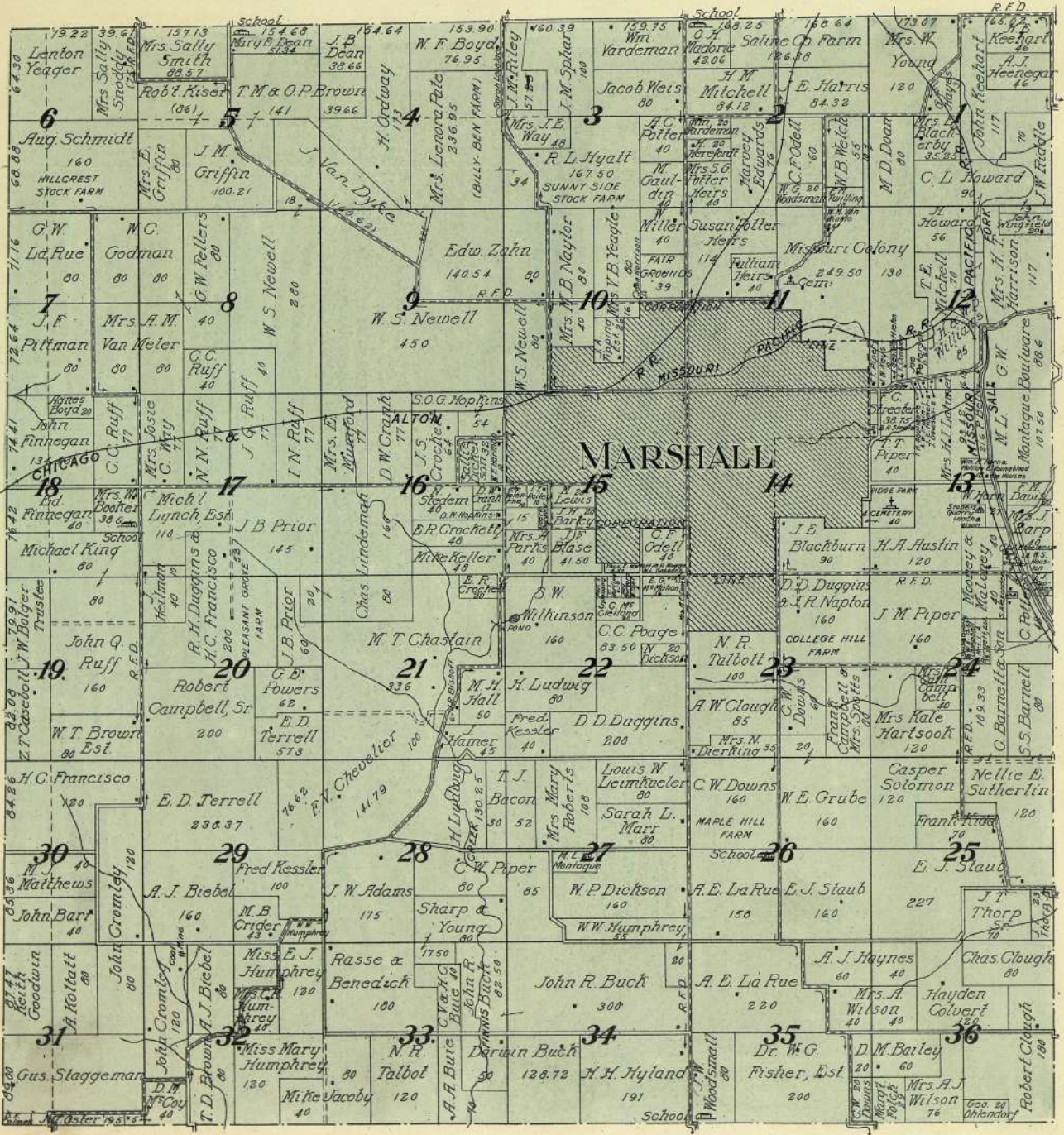


MAP OF  
**TOWNSHIP 49 N., RANGE 21 W.**  
OF THE 5th P. M.

Scale 2 inches to 1 mile

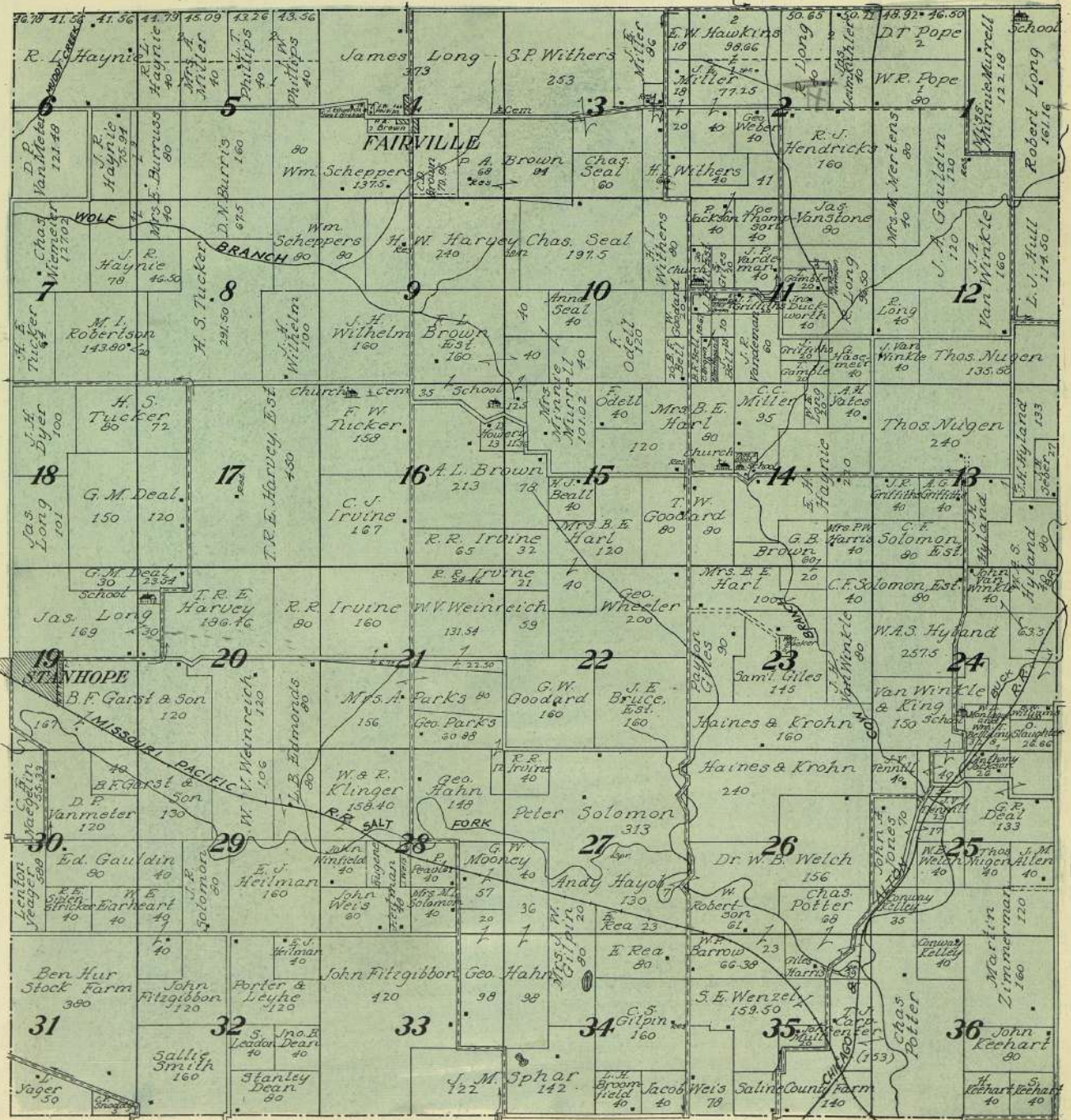



  
**MAP OF**  
**TOWNSHIP 50 N., RANGE 21 W.**  
**OF THE 5th P. M.**  
 Scale 2 inches to 1 mile

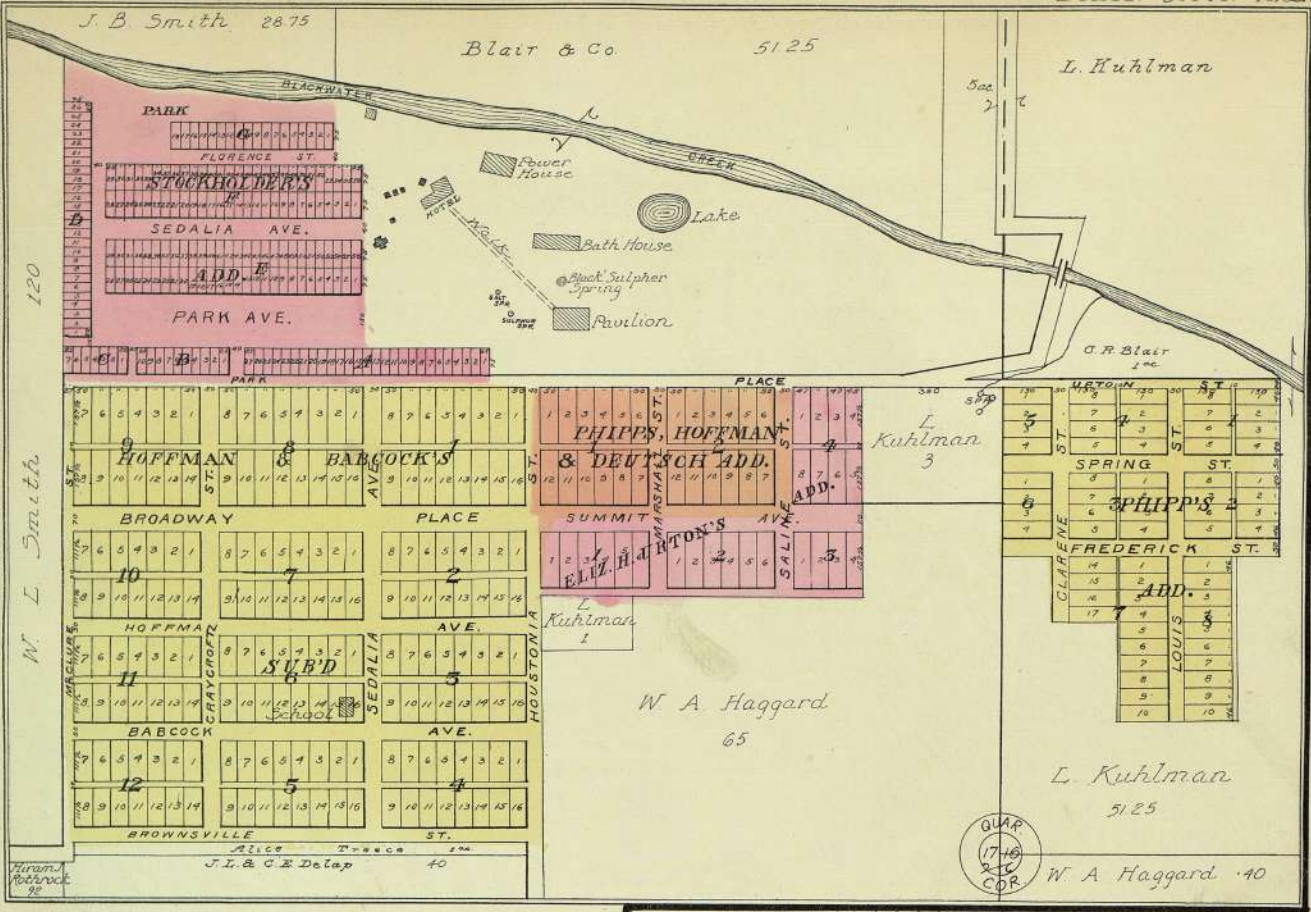



  
**MAP OF**  
**TOWNSHIP 51 N., RANGE 21 W.**  
 OF THE 5th P. M.

Scale 2 inches to 1 mile

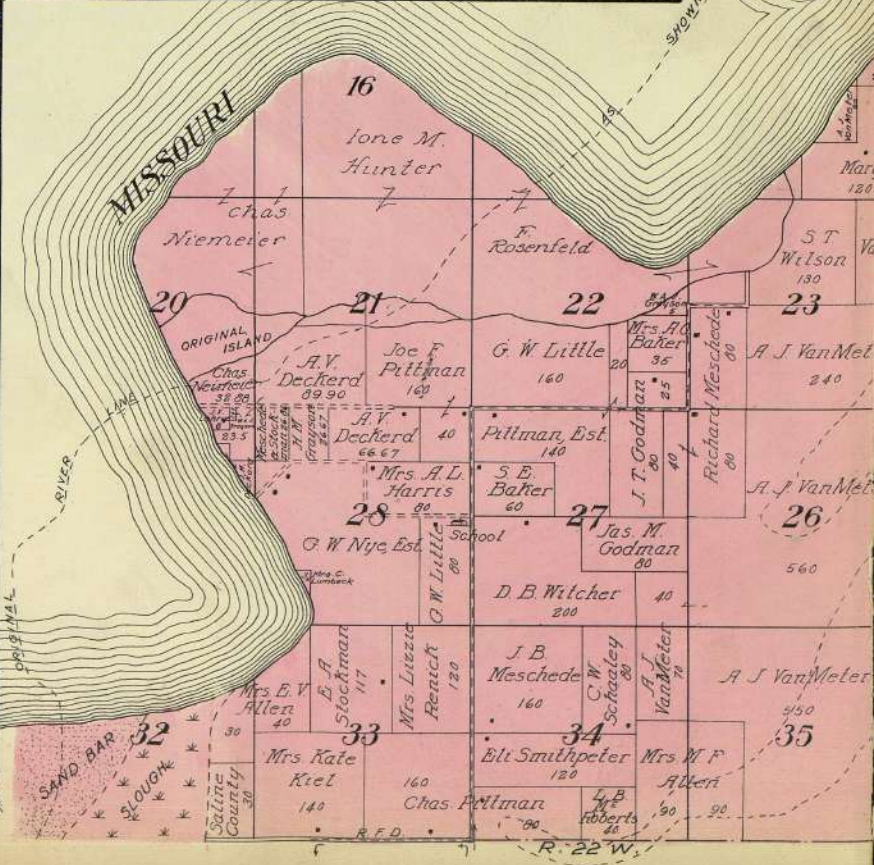
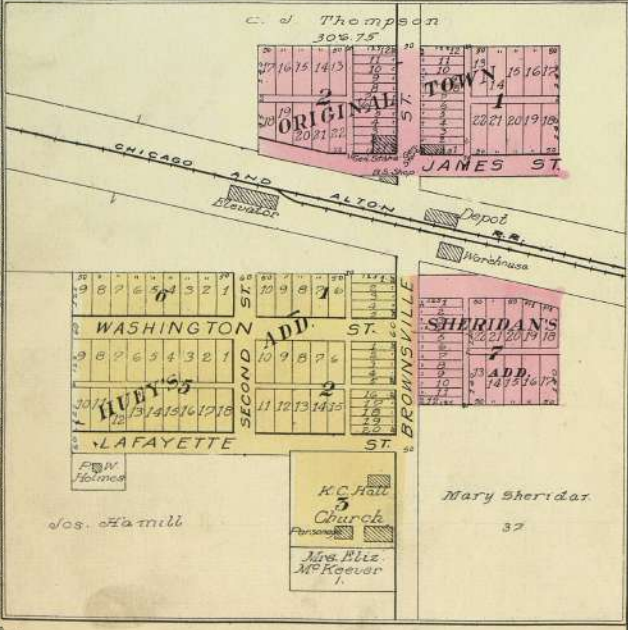


# McALLISTER SPRINGS



## SHACKELFORD

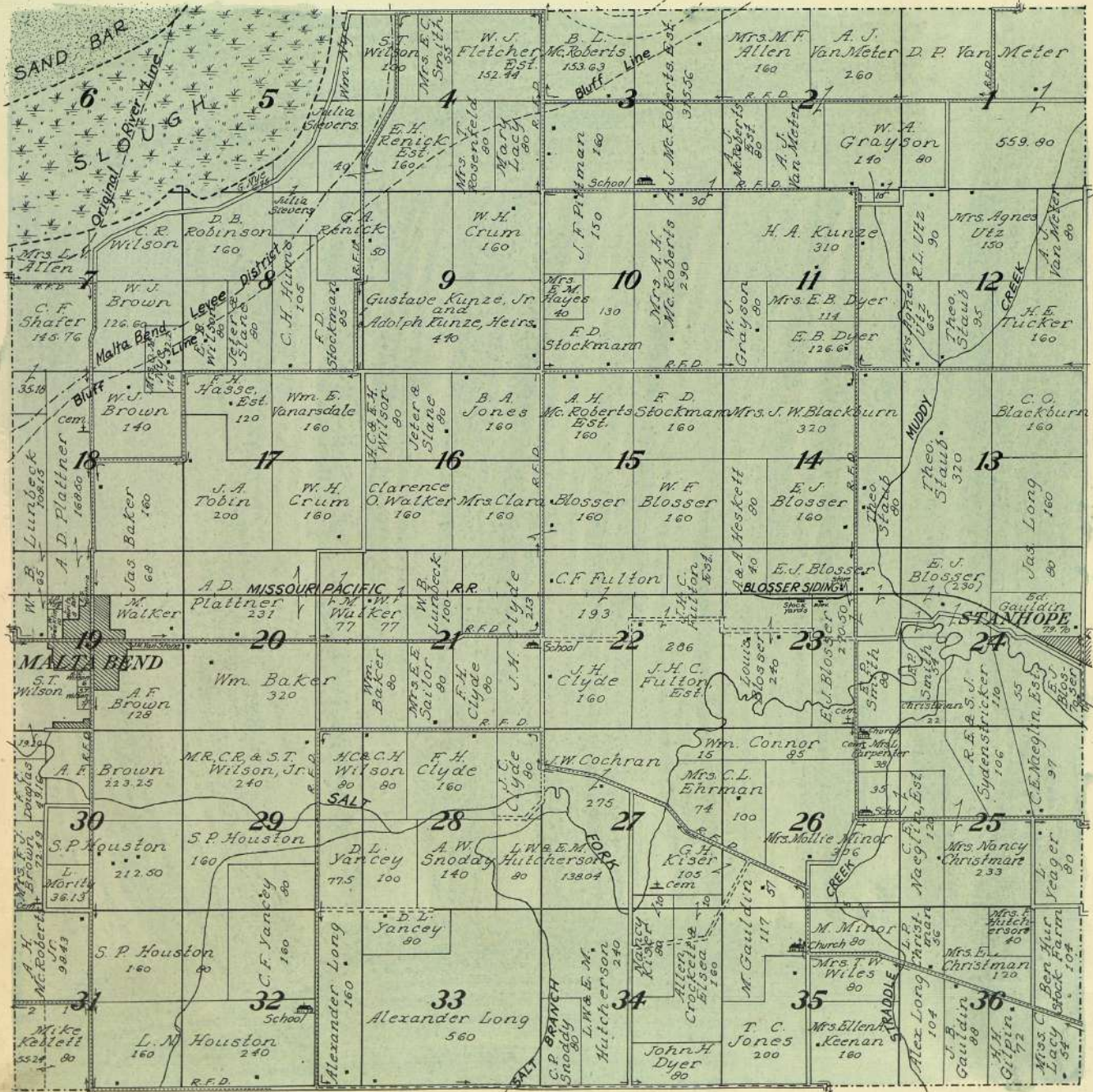
LOCATED IN THE S.W. 1/4 SEC. 14  
T. 50 N. R. 22 W. Scale 300ft. to 1 inch





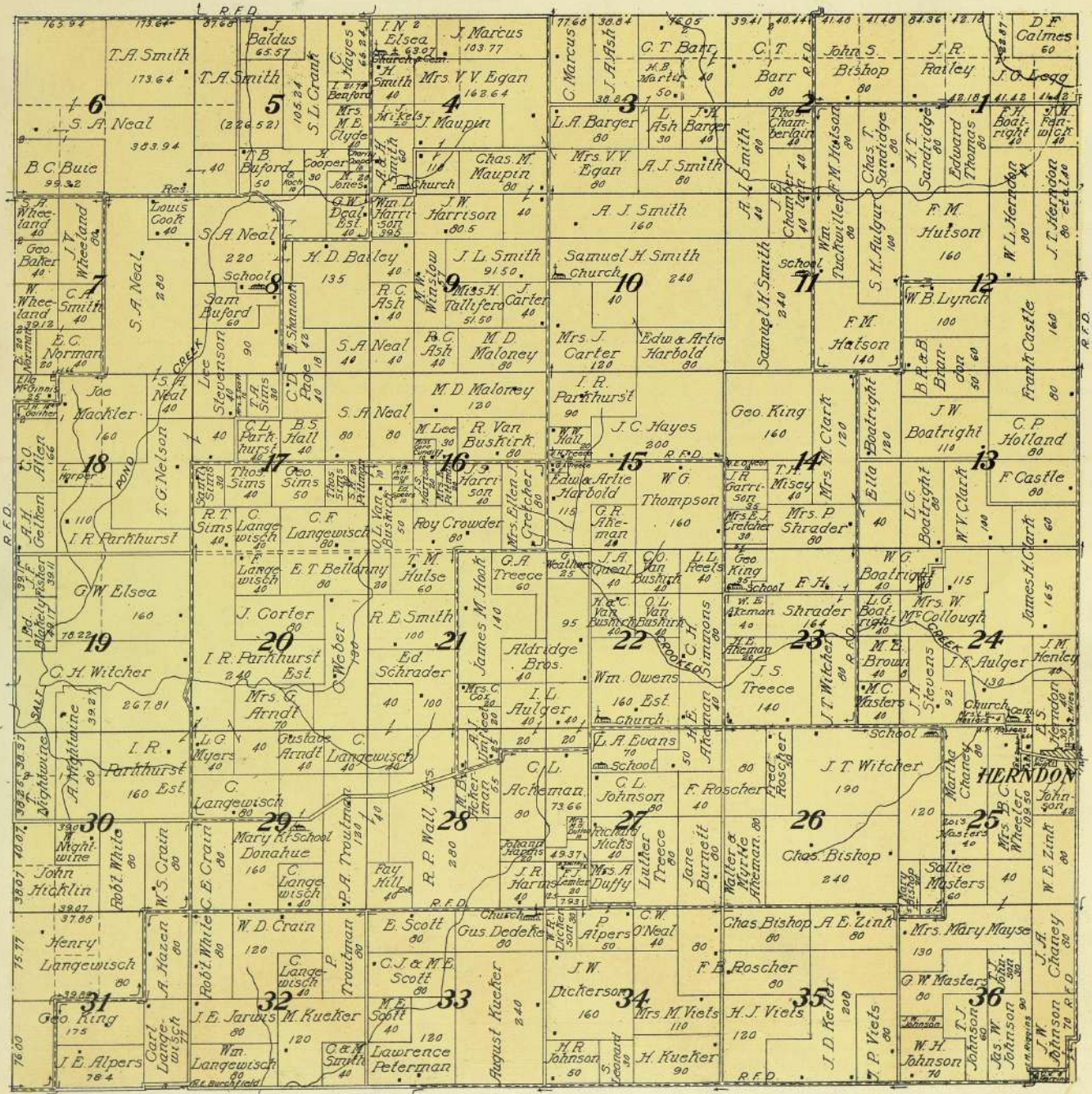

  
**MAP OF**
  
**TOWNSHIP 51 N., RANGE 22 W.**
  
 OF THE 5th P. M.

Scale 2 inches to 1 mile





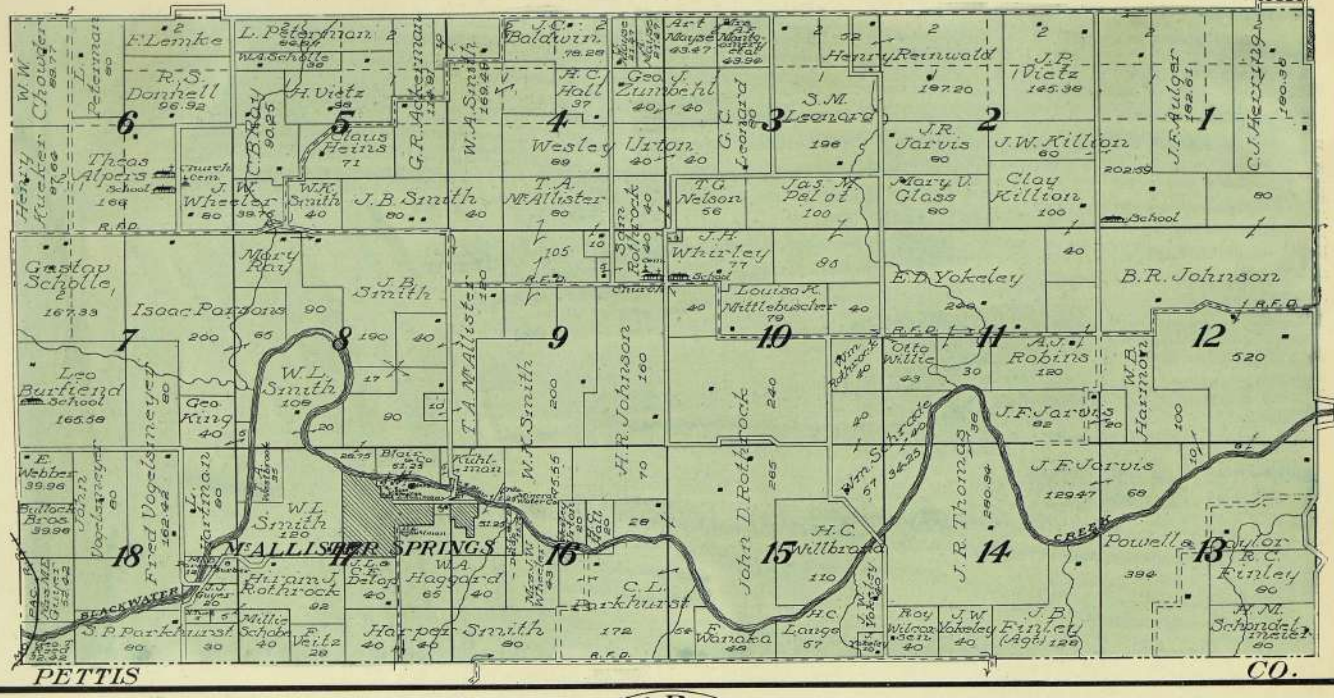
MAP OF  
**TOWNSHIP 49 N., RANGE 22 W.**  
 OF THE 5th P. M.  
 Scale 2 inches to 1 mile



**MAP OF**  
**Part of Township 48 N., Range 22 W.**

OF THE 5th P. M.

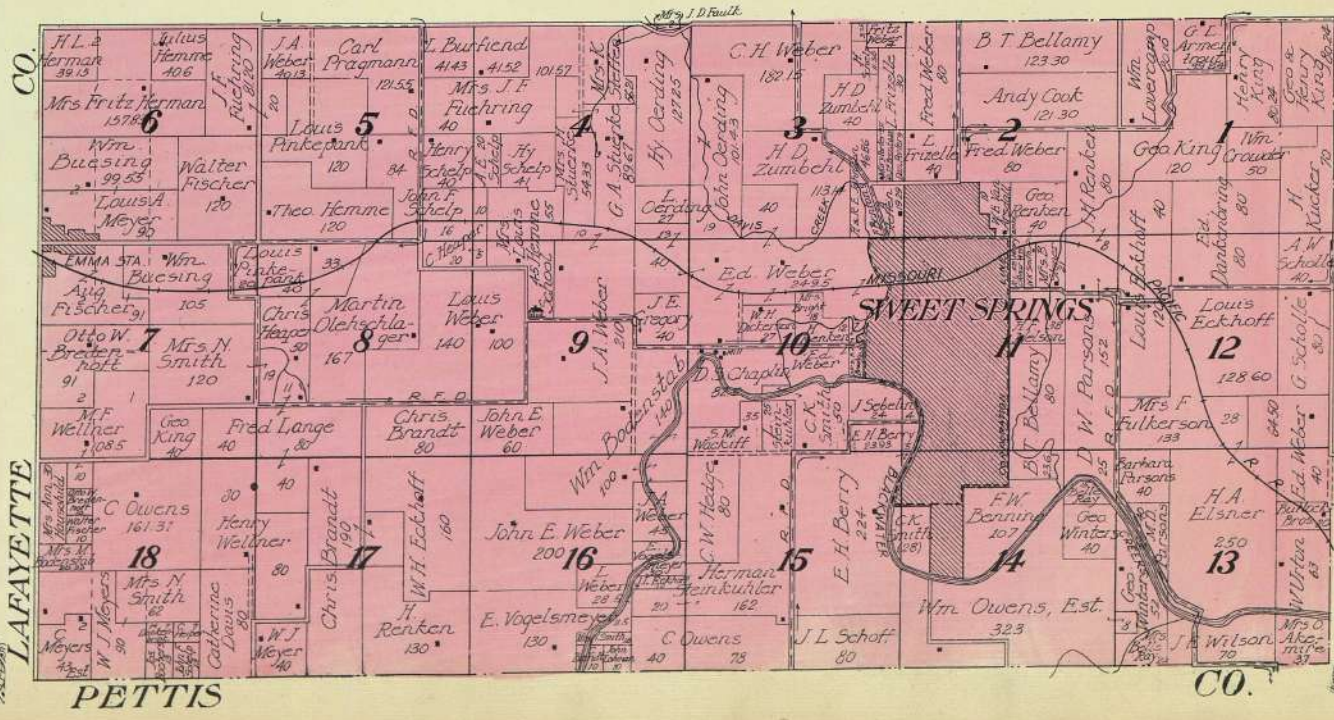
Scale 2 inches to 1 mile



**MAP OF**  
**Part of Township 48 N., Range 23 W.**

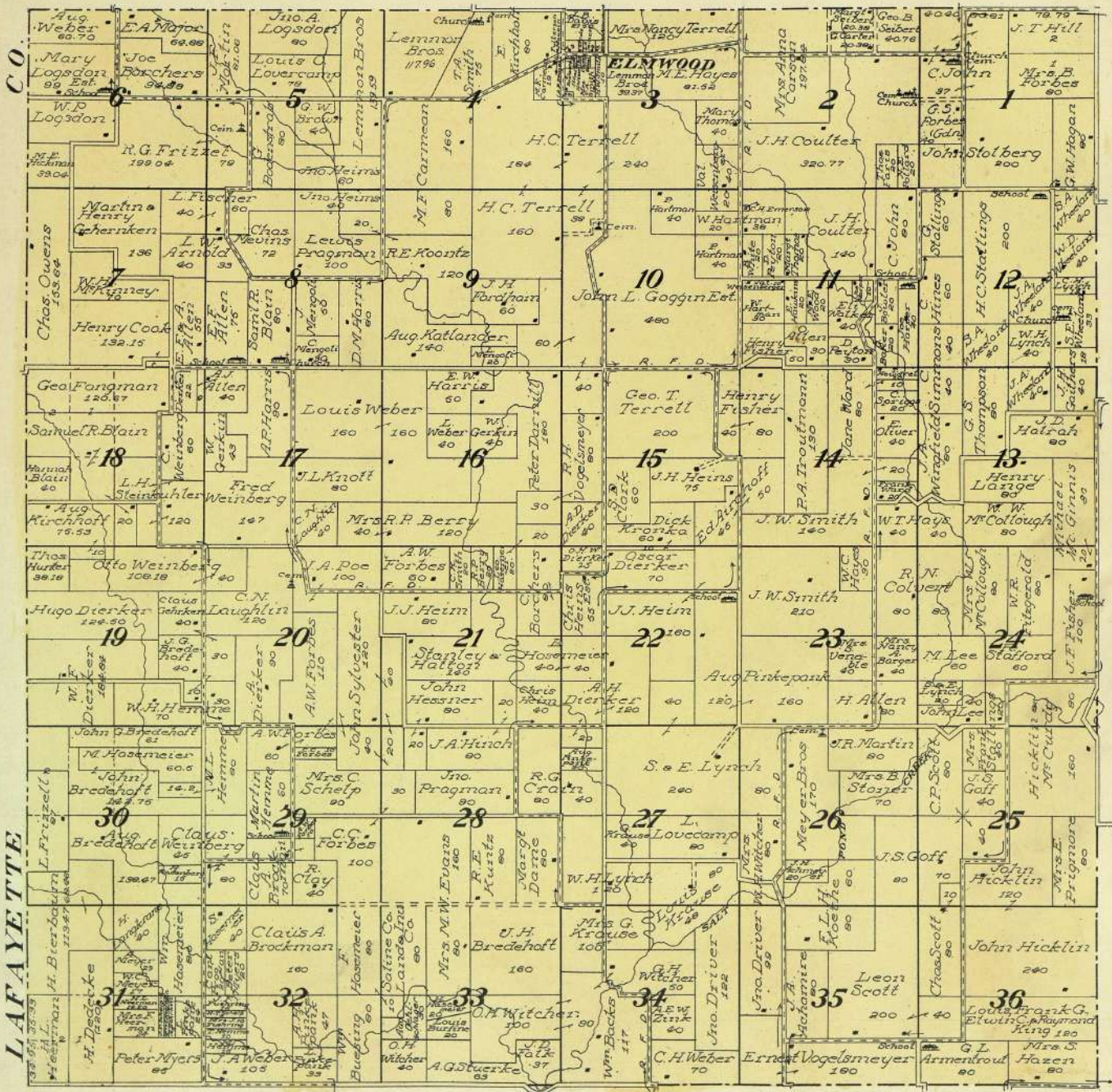
OF THE 5th P. M.

Scale 2 inches to 1 mile



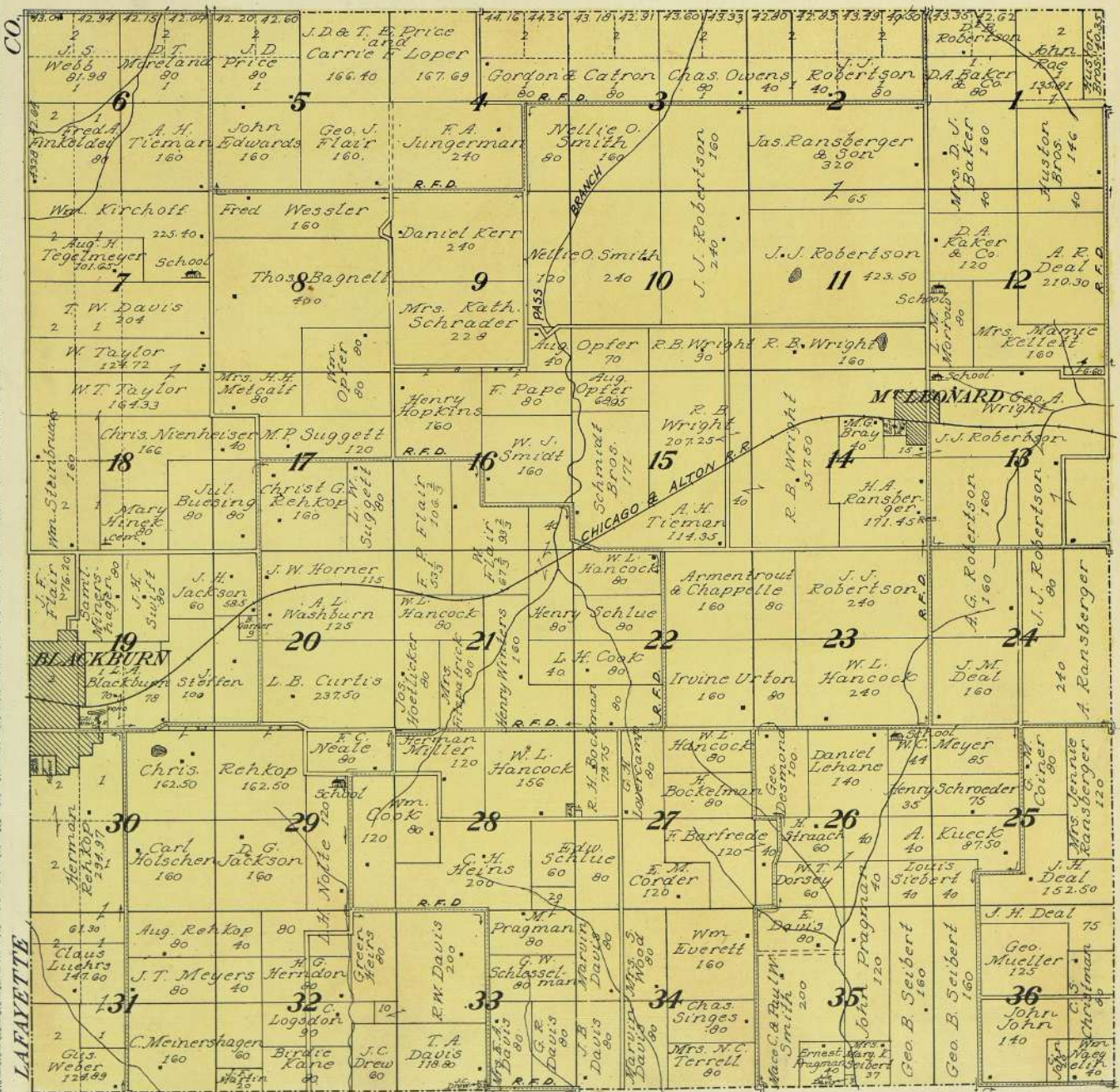

  
**MAP OF**
  
**TOWNSHIP 49 N., RANGE 23 W.**
  
 OF THE 5th P. M.

Scale 2 inches to 1 mile




  
**MAP OF**
  
**TOWNSHIP 50 N., RANGE 23 W.**
  
 OF THE 5th P. M.

Scale 2 inches to 1 mile



MISSOURI



MAP OF PART of TOWNSHIPS 51 and 52 N., RANGE 23 W.

OF THE 5th P. M.

Scale 2 inches to 1 mile

T. 52 N.

T. 51 N.

LAFAYETTE

